

Smooth Tension Wire, Spec

Non-spec Tension Wire will void systems warranties
 NOTE: Sold only in full coils. Weights are approximate.

Description	Part no.	Per Lb.	Coil Wt.	Price
6 ga., Galvanized	037018	10'	100	\$1.00
9 ga., Galvanized	037020	118'	100	\$1.00
11 ga., Galvanized	037022	33'	100	\$1.00
6 ga., Vinyl	636172	16'	100	\$1.21
9 ga., Vinyl	636182	25'	100	\$0.90
12.5 ga, HT Wood Spool	023546		100	\$102.15



Hog Rings

Weight is approximate.

Description	Part no.	Qty./Lb.	Case Wt.	Price/LB.
12 1/2 ga. Steel Zinc Coating	023601	224	25.00	\$2.17
9 ga. Steel Zinc Coating	023602	78	25.00	\$1.91
9 ga. Aluminum	023621	235	10.00	\$5.25
9 ga. Black	634142	132	10.00	\$3.67



Hog Rings / Automatic

Description	Part no.	Per Case	Case Wt.	Price
9 ga. Stanley Rings - ALUMINUM	070019	2500	10	\$105.61
9 ga. Gun	037152	1	1.73	\$94.90



Vinyl Coated Ties

Steel - vinyl coated

NOTE: Sold only in full bags of 100 pieces.
 Add digit to part no. for colour: 1 - Green 2 - Black 3 - Brown 4 - White

Description	Part no.	Per Case	Case Wt.	Price
6 1/2" x 11 ga.	62562	1000	34.58	\$0.04
6 1/2" x 9 ga.	62568	1000	34.58	\$0.13
8 1/4" x 9 ga.	63409	1000	41.98	\$0.13



Aluminum Ties

NOTE: Sold only in full bags of 100 pieces.

Description	Part no.	Per Case	Case Wt.	Price
6 1/2" x 11 ga.	023555	5600	50	\$0.06
6 1/2" x 9 ga.	023552	3500	47	\$0.08
8 1/4" x 9 ga.	011227	3000	48	\$2.62



Unican Lock Box

Ungalvanized Steel

Description	Part no.	Per Sack	Wt. Each	Price
2 1/8" Lock Hole	UN218	1	3.00	\$75.00

Lock Box Single hole

Description	Part no.	Per Sack	Wt. Each	Price
2 1/8" Lock Hole	018863	1	1.00	\$10.00



Painted Light-Duty Studded T-POST

.90

STEEL: 200 pieces per skid.

Description	Part no.	Wt. Each	Qty/Bundle	Price/ea.
6' - 0.90#	036043	5.40	200-300	\$3.49
7' - 0.90#	036044	6.30	200-300	\$4.03
8' - 0.90#	036045	7.20	200-300	\$4.57



Painted Heavy-Duty Studded T-POST

1.25

STEEL: 200 pieces per skid.

Description	Part no.	Wt. Each	Qty/Bundle	Price/ea.
6' - 1.25#	036049	7.50	200-300	\$5.00
7' - 1.25#	036050	8.75	200-300	\$5.65
8' - 1.25#	036051	10.00	200-300	\$6.24
9' - 1.25#	036052	11.25	200-300	\$6.99



T-Post Clips

Description	Part no.	Wt. Each	Qty.	Price/ea.
12 ga. JR	023655	.02	1000	\$25.00



Zinc Brite - Protective Coatings

Description	Part no.	Wt. Each	Qty.	Price
Zinc Brite	036413	24.0	1	\$250.00



U-Bolts

Steel - Galvanized
With Nut

Description	Part no.	Per Sack	Wt. Each	Price
1 7/8" OD x 1/2"	010751	50	.50	\$3.72
2 7/8" OD x 1/2"	010753	50	.60	\$1.19
3 1/2" OD x 1/2"	037341	50	.67	\$1.37



Barb Wire

Zinc Coated Steel
Commercial Quality

Two strands 12 1/2 ga., 14 ga. Barbs.
NOTE: Sold only in full reels. 1320' = 80 Rods

Description	Part no.	Per Reel	Wt. Each	Price
4 pt. Domestic	036310	1320'	82.0	\$64.46



High Tensile Barb Wire

High-Tensile Steel

Two strands 15 1/2 ga., 16 1/2 ga. Barbs.
NOTE: Sold only in full reels. 1320' = 80 Rods

Description	Part no.	Per Reel	Wt. Each	Price
4 pt. Class 3 .65 Zinc Coating	036312	1320'	43.0	\$55.44



Razor Ribbon Wire

Stainless Steel Barbed Tape
with .098" Galv. Core

NOTE: Sold only in 50' coils;
50' based on installation at 18" on center spacing.
Bulk packaging - 5 coils per box.

Description	Part no.	Per Coil	Coil Wt.	Price
18" Single Coil	013515	50'	12.0	\$28.41



Farm Fence 12.5 GA.

Description	Part no.	Length	Weight	Price
939-6	036192	330'	166.00	\$170.72
1047-6	036203	330'	189.00	\$143.90
1155-6	036209	330'	213.00	\$227.75
1478-6	036223	330'	265.00	\$336.11
1478-12	036222	330'	192.00	\$210.10

Farm Fence 14.5 GA.

Description	Part no.	Length	Weight	Price
939-6 HT	036194	330'	101.00	\$99.10
1047-6 HT	*036206	330'	115.00	\$110.80
2571-6	036228	165'	120.00	\$135.85

Horse Fence

4x2 - 12.5 GA. Knotted

Description	Part no.	Length	Weight	Price
4'	036183	100'	122.00	\$132.60
5'	036185	100'	151.00	\$161.60
6'	*036189	100'	180.00	\$191.80

Game Fence

12.5 GA.

Description	Part no.	Length	Weight	Price
1060-6	036234	330'	209.00	\$275.03
1060-12	036235	660'	290.00	\$387.08
1775-6	036241	330'	329.00	\$403.50
1796-6	036242	330'	347.00	\$432.75
1796-12	037272	330'	243.00	\$312.10
2096-6	036238	330'	400.00	\$479.40
2096-12	036233	330'	286.00	\$353.59

Lawn Fence / Non-climb 2" x 4"

12.5 GA.

Description	Part no.	Length	Weight	Price
3'	036132	100'	77.00	\$82.75
4'	036134	100'	101.00	\$109.50
5'	036136	100'	121.00	\$139.20
6'	036138	100'	145.00	\$164.14

Home & Garden Fence

Description	Part no.	Length	Weight	Price
35"	036140	50'	21.00	\$27.85

Utility Fabric 2" x 4"

14 GA.

Description	Part no.	Length	Weight	Price
3'	056641	100'	48.00	\$42.50
3'	056355	50'	24.00	\$25.82
4'	056642	100'	64.00	\$48.10
4'	056360	50'	40.00	\$31.38
5'	056643	100'	80.00	\$62.90
5'	036108	50'	38.50	\$31.60
6'	056644	100'	96.00	\$88.50
6'	056370	50'	49.00	\$46.50

Safety Fence

Description	Part no.	Length	Weight	Price
4' Orange	054203	50'	12.00	\$28.00
4' Green	036244	50'	12.00	\$28.00

Barbwire Droppers

Steel - Galvanized

Fence Stay

Description	Part no.	Qty.	Weight	Price
3'	013492	100	36.00	\$42.50
42"	013493	100	42.00	\$64.52
4'	013494	100	49.00	\$73.12



Staples

Description	Part no.	D2	Weight	Price
7/8"	037085		50.00	\$59.80
1 1/4" Barbed	011231		8.00	\$13.98
1 1/4" Barbed	011234		50.00	\$59.80
1 1/2" Barbed	011232		8.00	\$13.98
1 1/2" Barbed	037346		30.00	\$27.20
1 1/2" Barbed	011235		50.00	\$62.37
1 3/4" Barbed	011238		8.00	\$13.98
1 3/4" Barbed	037347		30.00	\$27.20
1 3/4" Barbed	011236		50.00	\$62.37
2" Barbed	037086		8.00	\$13.98
2" Barbed	037348		30.00	\$27.20
2" Barbed	011237		50.00	\$62.37



Round Wood Post

Pointed

Description	Part no.	Qty/Bundle	Weight	Price
2-3 x 7'	037106	150	14.79	\$1.62
2-3 x 8'	037107	150	17.34	\$1.92
2-3 x 10'	037108	150	21.20	\$2.55
2-3 x 12'	037109	150	26.42	\$3.28
3-4 x 7'	037111	110	26.21	\$2.94
3-4 x 8'	037112	100	29.70	\$3.45
3-4 x 9'	036710	100	33.33	\$3.99

Description	Part no.	Qty/Bundle	Weight	Price
3-4 x 10'	036715	100	36.57	\$4.36
3-4 x 12'	036720	100	45.15	\$5.46
4-5 x 7'	037117	75	40.96	\$4.76
4-5 x 8'	037118	75	47.45	\$5.55
4-5 x 9'	037119	75	53.17	\$6.37
5-6 x 7'	037122	50	58.36	\$6.95
5-6 x 8'	037123	50	67.28	\$8.06
5-6 x 9'	037124	50	76.48	\$9.22
6-7 x 7'	037127	35	78.60	\$9.52
6-7 x 8'	037128	35	90.20	\$11.04

Barrier Gate Kit

Single Swing Gate



Opening	Part no.	Price
8'		\$0.00
10'		\$0.00
12'		\$0.00
14'		\$0.00

Barrier Gate Kit

Double Swing Gate

2 - 3 1/2" x 6' gate posts (galvanized)
 4 - 3 1/2" Industrial Hinges
 4 - 3 1/2" Dome Tops

1 - All welded Gate Panel (1 7/8" galvanized steel)
 1 - Industrial Rolo Latch (lockable)



Opening	Part no.	Price
16'		\$0.00
18'		\$0.00
20'		\$0.00
22'		\$0.00

11ga. Chain Link - Texas Weave (TW)

Galvanized
(.106)

1.2 oz./ft. Zinc coating, 50' Compacted Rolls.

Description	Part no.	Weight/ft.	Price/ft2	Price/ft.
3'	054374	1.09	\$0.30	\$1.02
42"	054377	1.27	\$0.30	\$1.19
4'	054378	1.45	\$0.30	\$1.36
5'	054380	1.81	\$0.30	\$1.70
6'	054381	2.17	\$0.30	\$2.04

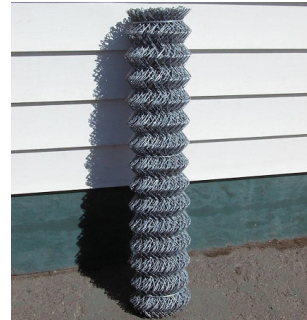


9ga. Chain Link - Texas Weave (TW)

Galvanized
(.134)

1.2 oz./ft. Zinc coating, 50' Compacted Rolls.

Description	Part no.	Weight/ft.	Price/ft2	Price/ft.
3'	054390	1.77	\$0.42	\$1.26
42"	054391	2.03	\$0.42	\$1.47
4'	054394	2.32	\$0.42	\$1.68
5'	054397	2.90	\$0.42	\$2.10
6'	054449	3.48	\$0.42	\$2.52
7'	054454	4.06	\$0.42	\$2.94
8'	054460	4.64	\$0.42	\$3.36
10'	054466	5.78	\$0.42	\$4.50
12'	054472	6.94	\$0.42	\$5.04



6ga. Chain Link - 2"

Galvanized
(.192)

1.6 oz./ft. Zinc coating, 25' uncompacted Rolls.

Description	Part no.	Weight/ft.	Price/ft2	Price/ft.
4'	054479	4.80	\$1.09	\$4.36
5'	054480	6.00	\$1.09	\$5.45
6'	054481	7.20	\$1.09	\$6.54
7'		8.47	\$1.09	\$7.63
8'	054484	9.68	\$1.09	\$8.72
10'	054491	12.10	\$1.09	\$10.90
12'	054492	13.31	\$1.09	\$13.08

9ga. Chain Link - 1 1/2"

Galvanized

1.2 oz./ft. Zinc coating, 50' Compacted Rolls.

Description	Part no.	Weight/ft.	Price/ft2	Price/ft.
4'	9CL1124	3.48	\$0.78	\$3.12
5'	9CL1125	4.35	\$0.78	\$3.90
6'	037174	5.24	\$0.78	\$4.68
7'	9CL1127	6.09	\$0.78	\$5.46
8'	054368	6.96	\$0.78	\$6.24
10'	054369	8.70	\$0.78	\$7.80
12'	9CL11212	10.44	\$0.78	\$9.36

9ga. Chain Link - 1 3/4"

Galvanized

1.2 oz./ft. Zinc coating, 50' Compacted Rolls.

Description	Part no.	Weight/ft.	Price/ft ²	Price/ft.
4'	9CL1344	2.96	\$0.47	\$1.88
5'	9CL1345	3.70	\$0.47	\$2.35
6'	9CL1346	4.44	\$0.47	\$2.82
7'	9CL1347	5.18	\$0.47	\$3.29
8'	9CL1348	5.92	\$0.47	\$3.76
10'	9CL13410	7.40	\$0.47	\$4.70
12'	9CL13412	8.87	\$0.47	\$5.64

11ga. Vinyl Coated Chain Link - Texas Weave (TW)

Extruded PVC, 50' Compacted Rolls.
Add digit to part no. for colour: 1 - Green 2 - Black 3 - Brown 4 - White

Description	Part no.	Weight/ft.	Price/ft2	Price/ft.
3'	51710	.69	\$0.30	\$0.90
42"	51768	.81	\$0.30	\$1.05
4'	51717	.92	\$0.30	\$1.20
5'	51719	1.15	\$0.30	\$1.50
6'	51720	1.38	\$0.30	\$1.80



9ga. Vinyl Coated Chain Link - Texas Weave (TW)

Extruded PVC, 50' Compacted Rolls.
Add digit to part no. for colour: 1 - Green 2 - Black 3 - Brown 4 - White

Description	Part no.	Weight/ft.	Price/ft2	Price/ft.
3'	51735	1.20	\$0.42	\$1.26
42"	51738	1.40	\$0.42	\$1.47
4'	51739	1.56	\$0.42	\$1.68
5'	51741	1.90	\$0.42	\$2.10
6'	51742	2.40	\$0.42	\$2.52



6ga. Vinyl Coated Chain Link - 2" (.192)

Extruded PVC, 25' Uncompacted Rolls.
Add digit to part no. for colour: 1 - Green 2 - Black 3 - Brown 4 - White

Description	Part no.	Weight/ft.	Price/ft2	Price/ft.
4'	530482	3.04	\$1.09	\$4.36
5'	6VCL25	3.80	\$1.09	\$5.45
6'	51753	4.56	\$1.09	\$6.54
7'	51757	5.32	\$1.09	\$7.63
8'	51762	6.08	\$1.09	\$8.72
10'	51764	7.60	\$1.09	\$10.90
12'	51765	9.12	\$1.09	\$13.08

9ga. Vinyl Coated Chain Link - 1 1/2"

Extruded PVC, 50' Compacted Rolls.
Add digit to part no. for colour: 1 - Green 2 - Black

Description	Part no.	Weight/ft.	Price/ft2	Price/ft.
4'	51723	2.24	\$0.78	\$3.12
5'	51724	2.80	\$0.78	\$3.90
6'	51725	3.36	\$0.78	\$4.68
7'	9VCL1127	3.92	\$0.78	\$5.46
8'	9VCL1128	4.48	\$0.78	\$6.24
10'	581200	5.60	\$0.78	\$7.80
12'	581440	6.72	\$0.78	\$9.36

9ga. Vinyl Coated Chain Link - 1 3/4"

Extruded PVC, 50' Compacted Rolls. Black only.

Description	Part no.	Weight/ft.	Price/ft ²	Price/ft.
4'	611480	1.82	\$0.47	\$1.88
5'	611600	2.27	\$0.47	\$2.35
6'	611720	2.70	\$0.47	\$2.82
7'	9VCL1347	3.15	\$0.47	\$3.29
8'	9VCL1348	3.60	\$0.47	\$3.76
10'	517312	4.54	\$0.47	\$4.70
12'	611440	5.40	\$0.47	\$5.64

Universal Panels

Height	Part	Weight	Price
4' (46" net)	442002	47.00	\$128.19
5' (58" net)	442012	54.00	\$144.76


Universal 3-Rail Panels

Height	Part	Weight	Price
4' (46" net)	442292	59.00	\$153.83
5' (58" net)	442312	66.00	\$170.38


Spear Panels

Height	Part	Weight	Price
4' (46" net)	442492	48.00	\$128.19
5' (58" net)	442512	55.00	\$144.76
6' (70" net)	442532	61.00	\$161.61

Spear 3-Rail Panels

Height	Part	Weight	Price
5' (58" net)	442792	67.00	\$170.38
6' (70" net)	442812	73.00	\$185.30



Staggered Spear Panels

Height	Part	Weight	Price
4' (46" net)	442992	47.00	\$128.19
5' (58" net)	443002	54.00	\$144.76



Picket Panels

Height	Part	Weight	Price
5' (58" net)	443182	55.00	\$144.76
6' (70" net)	443202	61.00	\$161.61



Square Post

Height	Part	Weight	Price
2" x 2" x 69"	443382	11.00	\$16.00
2" x 2" x 81"	443402	12.00	\$18.00
2" x 2" x 93"	443412	14.00	\$20.00
2" x 2" x 105"	443432	15.50	\$24.00



2-Rail Single Gate Kit

Height	Part	Weight	Price
4' (46" net)	444462	16.00	\$101.53
5' (58" net)	444472	18.00	\$114.15
6' (70" net)	444482	20.00	\$118.05

2-Rail Double Gate Kit

Height	Part	Weight	Price
4' (46" net)	444502	37.00	\$203.82
5' (58" net)	444512	41.00	\$225.22
6' (70" net)	444522	45.00	\$229.49

3-Rail Single Gate Kit

Height	Part	Weight	Price
4' (46" net)	444542	18.00	\$115.20
5' (58" net)	444552	20.00	\$127.82
6' (70" net)	444702	22.00	\$131.70

3-Rail Double Gate Kit

Height	Part	Weight	Price
4' (46" net)	444572	42.00	\$231.16
5' (58" net)	444582	45.00	\$252.55
6' (70" net)	444742	49.00	\$256.82

Line Rail Bracket

Description	Part no.	Weight	Qty	Price
1 1/4" Rail, 2" Post	444002	1.00	100	\$4.62



End Rail Bracket

Description	Part no.	Weight	Qty	Price
1 1/4" Rail, 2" Post	036753	1.00	100	\$3.69



Swivel Bracket

Description	Part no.	Weight	Qty	Price
1 1/4" Square Rail	444062	0.50	100	\$2.76



Post Base

Description	Part no.	Weight	Qty	Price
2" Square Post, 15 ga.	447982	2.80	10	\$30.00



Spear Tops

Description	Part no.	Weight	Qty	Price
5/8" H Quad Flair	*444372	0.04	210	\$0.79
5/8" H Traid	*444392	0.04	210	\$0.79



Phobos

Basic Kit

Includes Libra Control Panel with built-in receiver, 2 Photocells, 2 Transmitters and 1 external antenna

Description	Max Leaf Weight	Max Gate Width	Price
Phobos BT Double	550 lbs.	up to 10'	\$1,080.00



Joint

Basic Kit

Includes Aries Control Panel, 2 Photocells, 2 Transmitters, 1 external antenna and 1 Intrinsic receiver.

Description	Max Leaf Weight	Max Gate Width	Price
Joint Double	441 lbs @ 8 ft	up to 10'	\$1,610.00



LUX

Basic Kit

Includes Rigel Control Panel, 2 Photocells, 2 Transmitters, 1 external antenna, and 1 Intrinsic receiver.

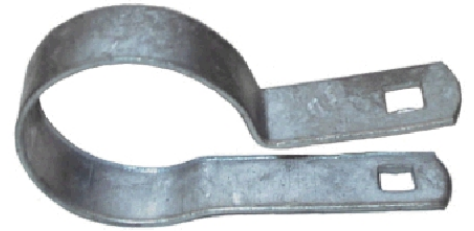
Description	Max Leaf Weight	Max Gate Width	Price
LUXGV2B Double	660 lbs.	up to 16'	\$1,930.00



Regular Tension Bands

Pressed Steel - Galvanized

Description	Part no.	Per Sack	Wt. Each	Price
1 3/8"	010101	250	.12	\$0.24
1 5/8"	010102	250	.14	\$0.28
1 7/8"	010103	250	.15	\$0.30
2 3/8"	010104	250	.18	\$0.33
2 7/8"	010105	100	.20	\$0.39
3 1/2"	010107	100	.23	\$0.50
4"	010108	100	.24	\$0.47
4 1/2"	010109	100	.30	\$0.60
Use 5/16" x 1 1/4" Carriage Bolt				
6 5/8"	010112	100	.56	\$1.50



Regular Brace Bands

Pressed Steel - Galvanized

Description	Part no.	Per Sack	Wt. Each	Price
1 3/8"	010301	250	.13	\$0.27
1 5/8"	010302	250	.15	\$0.30
1 7/8"	010303	250	.18	\$0.33
2 3/8"	010304	250	.21	\$0.45
2 7/8"	010305	100	.24	\$0.44
3 1/2"	010307	100	.30	\$0.55
4"	010308	100	.34	\$0.52
4 1/2"	010309	100	.36	\$0.65
Use 5/16" x 1 1/4" Carriage Bolt				
6 5/8"	10660	50	.65	\$0.00



Regular 2-Way Brace Bands

Pressed Steel - Galvanized

Description	Part no.	Per Sack	Wt. Each	Price
1 7/8" 2-way	010310	100	.21	\$0.46
Use 5/16" x 1 1/4" Carriage Bolt				
2 3/8" 2-way	010313	100	.25	\$0.46



Wall Clamp

Steel - Galvanized

Description	Part no.	Per Sack	Wt. Each	Price
1 3/8"	036350	100	.15	\$0.19
1 5/8"	WC158	100	.18	\$0.26



Dome Caps

Die-cast Aluminum
Heavy

Description	Part no.	Per Sack	Wt. Each	Price
1 3/8"	011301	350	.06	\$0.25
1 5/8"	011302	350	.09	\$0.32
1 7/8"	011303	250	.10	\$0.42
2 3/8"	011304	150	.14	\$0.60
2 7/8"	011315	150	.20	\$0.85
3 1/2"	011316	150	.22	\$1.25
4"	011317	100	.25	\$1.22
4 1/2"	011313	50	.32	\$1.89
6 5/8"	011319	4	.56	\$3.31



Dome Caps - Pressed Steel

Pressed Steel - Galvanized

Description	Part no.	Per Sack	Wt. Each	Price
1 3/8"	011601	250	.12	\$0.42
1 5/8"	011602	250	.16	\$0.40
1 7/8"	011603	200	.27	\$0.45
2 3/8"	011604	125	.34	\$0.60
2 7/8"	011605	100	.53	\$1.03
3 1/2"	011607	25	.67	\$1.85
4"	011608	25	1	\$3.79
4 1/2"	011609	25	1.63	\$2.05
6 5/8"	011610	10	3.50	\$4.90



Eye-Tops

Die-cast Aluminum

Description	Part no.	Per Sack	Wt. Each	Price
1 5/8" x 1 3/8"	011901	200	.11	\$0.53
1 7/8" x 1 3/8"	011902	100	.16	\$0.80
1 7/8" x 1 5/8"	011903	100	.17	\$0.82
2 3/8" x 1 5/8"	011904	100	.19	\$0.93



Eye-Tops - Dura Top

Pressed Steel - Galvanized
Dura Top

Description	Part no.	Per Sack	Wt. Each	Price
1 5/8" x 1 3/8"	012250	100	.20	\$0.67
1 7/8" x 1 3/8"	012251	100	.23	\$0.70
1 7/8" x 1 5/8"	012260	100	.25	\$0.65



Eye-Tops - Standard

 Pressed Steel - Galvanized
 Standard

Description	Part no.	Per Sack	Wt. Each	Price
1 5/8" x 1 5/8"	012252	100	.51	\$0.97
1 7/8" x 1 5/8"	012253	100	.53	\$1.15
2 3/8" x 1 5/8"	012254	50	.64	\$1.33
2 7/8" x 1 5/8"	012255	50	1.02	\$1.23


Rail-Ends

Die-cast Aluminum

Description	Part no.	Per Sack	Wt. Each	Price
1 3/8"	012301	500	.10	\$0.40
1 5/8"	012302	250	.16	\$0.60


Rail-Ends - Pressed Steel

Pressed Steel - Galvanized

Description	Part no.	Per Sack	Wt. Each	Price
1 5/8"	012506	100	.33	\$0.77
1 7/8"	012508	50	.39	\$1.25


Rail-Ends 2-Hole

Pressed Steel - Galvanized

Description	Part no.	Per Sack	Wt. Each	Price
1 5/8"	012507	100	.48	\$1.40
1 7/8"		50	.51	\$0.00


Sleeves

Steel - Galvanized

Description	Part no.	Per Sack	Wt. Each	Price
1 3/8" x 6"	012601	100	.39	\$0.86
1 5/8" x 6"	012602	50	.53	\$0.86



Brace or End Rail Clamps

Pressed Steel - Galvanized

Sizes: Post first - Rail second.

Description	Part no.	Per Sack	Wt. Each	Price
1 3/8" x 1 3/8"	015501	100	.32	\$0.75
1 5/8" x 1 3/8"	015502	100	.45	\$1.22
Use 5/16" x 2" Carriage Bolt				
1 7/8" x 1 3/8"	015506	100	.50	
1 5/8" x 1 5/8"	015503	100	.50	\$1.00
1 7/8" x 1 5/8"	015504	100	.54	\$0.94
Use 5/16" x 2 1/4" Carriage Bolt				
2 3/8" x 1 5/8"	015505	50	.65	\$1.80
Use 5/16" x 2 1/2" Carriage Bolt				
2 7/8" x 1 5/8"	015508	50	.76	\$1.90



Boulevard Clamps

Pressed Steel - Galvanized

Description	Part no.	Per Sack	Wt. Each	Price
1 3/8" x 1 3/8"	015530	50	.56	\$0.60
1 5/8" x 1 3/8"	015531	50	.58	\$1.39
1 7/8" x 1 3/8"	015532	50	.72	\$2.36
1 5/8" x 1 5/8"	015534	50	.60	\$0.82
1 7/8" x 1 5/8"	015535	50	.73	\$2.15
2 3/8" x 1 5/8"	015536	50	.80	\$2.35
2 7/8" x 1 5/8"	015538	50	1.00	\$1.23
Use 5/16" x 2 1/2" Carriage Bolt				
4" x 1 5/8"	015540	50	1.06	



Barb Wire Arms 45°

Pressed Steel - Galvanized

Description	Part no.	Per Sack	Wt. Each	Price
1 7/8" x 1 5/8"	013108	25	1.70	\$3.12
2 3/8" x 1 5/8"	013109	25	1.80	\$3.50



Barb Wire V-Arms

One-piece Line Arm 6-strand

Pressed Steel - Galva

Description	Part no.	Per Sack	Wt. Each	Price
1 7/8" x 1 5/8"	013121	15	2.75	\$3.69
2 3/8" x 1 5/8"	013122	15	3.00	\$4.06



Barb Wire Arms Vertical

Pressed Steel - Galvanized

Description	Part no.	Per Sack	Wt. Each	Price
1 7/8" x 1 5/8"	013123	25	1.50	\$2.64
2 3/8" x 1 5/8"	013124	25	1.60	\$3.19



Corner Arms 45° - Pressed Steel

Pressed Steel - Galvanized

Description	Part no.	Per Sack	Wt. Each	Price
2 3/8"	013380	5	3.20	\$11.01
2 7/8"	013381	5	3.50	\$6.47
3 1/2"	036316	5	5.50	\$7.00



Corner Arms 45°

Malleable Iron - Galvanized

Description	Part no.	Per Sack	Wt. Each	Price
2 3/8"	013380	5	3.48	
2 7/8"	013381	5	4.46	\$6.47
3 1/2"	036316	5	5.40	\$7.00



Corner V-Arms

6-Strand - Galvanized

Description	Part no.	Per Sack	Wt. Each	Price
2 7/8"	013391	5	6.63	
3 1/2"	036318	5	7.20	



Extension Arm Only

Pressed Steel - Galvanized

Description	Part no.	Per Sack	Wt. Each	Price
With S Slot	013103	50	.89	\$1.47
S Slot Notched for V-Arm	013104	50	.75	\$1.49



Holding Bracket for Extension Arm

Pressed Steel - Galvanized

NOTE: Use with one 1/8" x 1" Brace Band (sold separately).

Description	Part no.	Per Sack	Wt. Each	Price
Universal	013125	50	.24	\$0.80



Barb Bases

Pressed Steel - Galvanized

Description	Part no.	Per Sack	Wt. Each	Price
1 7/8" x 1 5/8"	012882	50	.74	\$3.06
2 3/8" x 1 5/8"	012883	50	.87	\$3.64
2 7/8" x 1 5/8"	012884	25	1.26	\$4.77



Truss Tighteners

Pressed Steel - Galvanized

Description	Part no.	Per Sack	Wt. Each	Price
Residential	018510	100	.24	
Industrial	018101	100	.45	\$1.00



Threaded Truss Rods

Steel - Galvanized

3/8" diameter with nut

Description	Part no.	Per Sack	Wt. Each	Price
10' 6"	017901	25	3.95	\$3.75



Turnbuckles

Zinc-plated Steel End Fittings

Eye and Eye

Description	Part no.	Per Sack	Wt. Each	Price
3/8" x 6"	013452	100	.50	\$4.50



Corner Wood Adapter Clamps

Pressed Steel - Galvanized

NOTE: Set Screw included.

Description	Part no.	Qty.	Weight	Price
1 7/8"	011161	10	1.41	\$4.99
2 3/8"	011162	10	1.60	\$5.33



Adjustable Wood Adapter Clamps

Pressed Steel - Galvanized

Biasable to 25°

NOTE: Bolts included.

Description	Part no.	Qty.	Weight	Price
1 7/8"	011081	25	.78	\$1.94
2 3/8"	011082	25	.75	\$1.40

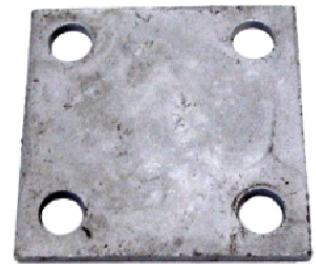


Base Plates

Steel - Galvanized

Weld-on type with
11/16" holes

Description	Part no.	Per Sack	Wt. Each	Price
3" x 6" 1/4"	010867	10	1.15	\$1.90
4" x 4" 1/4"	010873	10	1.06	\$1.65
4" x 6" 1/4"	010872	10	1.59	\$2.38
6" x 6" 1/4"	010868	10	2.50	\$3.75



Kwik Bolt Fasteners

Interlocking wedge action provides maximum contact with masonry.

Description	Part no.	Per Sack	Wt. Each	Price
1/2" x 2 3/4"	010746	50	.50	\$0.41
1/2" x 3 3/4"	010334	50	.55	\$0.45
3/8" x 2 3/4"	011244	100	.25	\$0.25



Carriage Bolts

Steel - Galvanized

With Nut

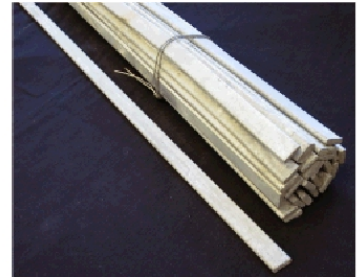
Description	Part no.	Per Sack	Wt. Each	Price
5/16" x 1 1/4"	010701	2000	.039	\$0.09
3/8" x 2"	010706	1000	.078	\$0.21
3/8" x 2 1/4"	010707	1000	.084	\$0.15
3/8" x 2 1/2"	010708	1000	.090	\$0.22
3/8" x 3"	010710	1000	.101	\$0.29
3/8" x 3 1/2"	010712	1000	.112	\$0.31



Tension Bars 3/16" x 5/8"

Steel - Galvanized

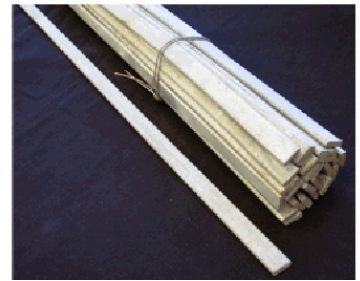
Description	Part no.	Per Sack	Wt. Each	Price
34"	013601	25	1.13	\$0.79
40"	013602	25	1.33	\$0.92
46"	013603	25	1.53	\$1.35
58"	013604	25	1.92	\$1.75
70"	013605	25	2.32	\$2.10



Tension Bars 3/16" x 3/4"

Steel - Galvanized

Description	Part no.	Per Sack	Wt. Each	Price
46"	013703	25	1.83	
58"	013704	25	2.31	\$1.44
70"	013705	25	2.79	\$2.55
82"	013706	25	3.27	\$3.02
94"	013707	25	3.74	\$3.40
118"	013709	25	4.70	\$4.20
142"	013710	25	5.66	\$5.25



Tension Band

Description	Part no.	Weight	Qty	Price
1 3/8"	600012	250	0.14	\$0.37
1 5/8"	600022	250	0.15	\$0.39
1 7/8"	600032	250	0.18	\$0.41
2 3/8"	600042	250	0.2	\$0.44
2 7/8"	600052	100	0.23	\$0.47
3 1/2"	676592	100	0.24	\$0.64



Brace Band

Description	Part no.	Weight	Qty	Price
1 3/8"	600891	250	0.3	\$0.28
1 5/8"	600822	250	0.56	\$0.42
1 7/8"	600832	250	0.06	\$0.44
2 3/8"	600842	250	0.09	\$0.47
2 7/8"	600852	100	0.1	\$0.47
3 1/2"	689832	100	0.14	\$0.65



DC Dome Cap

Description	Part no.	Weight	Qty	Price
1 3/8"	601912	350	0.2	\$0.37
1 5/8"	601922	350	0.22	\$0.48
1 7/8"	601932	250	0.25	\$0.55
2 3/8"	601942	250	0.32	\$0.73
2 7/8"	603032	150	0.56	\$1.01
3 1/2"	634202	50		\$2.27



PS Dome Cap

Description	Part no.	Weight	Qty	Price
1 3/8"	602392	25		\$0.67
1 5/8"	602402	25		\$0.80
1 7/8"	634252	25		\$1.40

DC Eye Top

Description	Part no.	Weight	Qty	Price
1 5/8" x 1 3/8"	603012	100		\$0.66
1 7/8" x 1 3/8"	603022	100		\$1.22
1 7/8" x 1 5/8"	634292	100		\$1.21
2 3/8" x 1 5/8"	603042	50		\$1.28



P.S. Eye Top

Description	Part no.	Weight	Qty	Price
1 7/8" x 1 5/8"	603922	100		\$1.04
2 3/8" x 1 5/8"	634392	50		\$1.54
2 3/8" x 1 5/8"	481282	1		\$10.00

Rail End

Description	Part no.	Weight	Qty	Price
1 3/8"	634432	500		\$0.92
1 5/8"	606322	250		\$0.89

PS Rail End

Pressed Steel

Description	Part no.	Weight	Qty	Price
1 3/8"	634472	500		\$1.44
1 5/8"	606912	250		\$0.99

Black Sleeve

Description	Part no.	Weight	Qty	Price
1 3/8"	607112	100		\$1.14
1 5/8"	607122	50		\$1.32

Tension Bar 5/8 Ind

Steel

Description	Part no.	Weight	Qty	Price
46"	635252	100		\$3.01
58"	635672	100		\$3.91
70"	635692	100		\$4.62
82"	635752	25		\$5.80
94"	635762	25		\$6.65



Ties

Description	Part no.	Weight	Qty	Price
6 1/2" x 9ga.	625682	100		\$0.06
8 1/4" x 9ga.	625702	100		\$0.07



Hog Rings

10 lbs/box

Description	Part no.	Weight	Qty	Per lb.
9 ga.	624822	1/lb 132 pcs		\$2.92


Bottom Wire

25'/lb

Description	Part no.	Weight	Qty	Per lb.
9 ga.	636182	25' / lb		\$0.90
6 ga.	801362	10' / lb		\$1.39

Gate Frame Hinge

Description	Part no.	Weight	Qty	Price
1 3/8" x 5/8"	608632	50		\$0.76
1 5/8" x 5/8"	608812	50		\$1.20


Gate Post Hinge

Description	Part no.	Weight	Qty	Price
1 7/8" x 5/8"	634602	50		\$0.99
2 3/8" x 5/8"	608982	50		\$1.32
2 3/8" x 5/8" HD	634592	50		\$2.01
2 7/8" x 5/8"	481432	50		\$2.49


Gate Frame Collar

Description	Part no.	Weight	Qty	Price
1 5/8" x 3/4"	634662	50		\$1.94

Carriage Bolt

Description	Part no.	Weight	Qty	Price
5/16" x 1 1/4"	622012	100 / box		\$0.15

4 pt. Barb Wire

Description	Part no.	Weight	Qty	Per Roll
Spectra Black	481572	1		\$165.00

Ez Latch Rod

Description	Part no.	Weight	Qty	Price
41"	611462	1		\$11.00

Gate Post Collar

Description	Part no.	Weight	Qty	Price
2 3/8" x 3/4"	634702	50		\$6.43
2 7/8" x 3/4"	634712	50		\$7.21
3 1/2" x 3/4"	634722	50		\$7.71

Hanger Bold Hinge

Description	Part no.	Weight	Qty	Price
3/4" x 6"	634542	50		\$1.45

Gate Forklatch

Description	Part no.	Weight	Qty	Price
1 3/8" x 1 7/8"	611342	25		\$2.37
1 3/8" x 2 3/8"	611352	25		\$2.84
1 5/8" x 2 3/8"	611392	25		\$3.21
1 5/8" x 2 7/8"	611402	25		\$3.50



Gate Frame Hinges

Pressed Steel - Galvanized
Regular
Bolts Extra

Description	Part no.	Per Sack	Wt. Each	Price
1 3/8" x 5/8"	014104	100	.31	\$0.60
1 5/8" x 5/8"	014105	50	.52	\$0.93



Post Hinges

Pressed Steel - Galvanized
Regular
Bolts Extra

Description	Part no.	Per Sack	Wt. Each	Price
1 3/8" x 5/8"	014302	50	.44	\$1.17
1 7/8" x 5/8"	014326	50	.51	\$1.05
2 7/8" x 5/8"	014310	50	1.11	\$2.00
2 3/8" x 5/8"	014328	50	.56	\$1.10



Gate Frame Collar Hinge

Pressed Steel - Galvanized
C/W Bolts

Description	Part no.	Per Sack	Wt. Each	Price
1 3/8" x 3/4"	036333	80	.89	\$2.96
1 5/8" x 3/4"	036335	80	1.20	\$1.90



Gate Post Collar

Pressed Steel - Galvanized
Industrial

Description	Part no.	Per Sack	Wt. Each	Price
2 3/8" x 3/4"	036339	60	.80	\$4.45
2 7/8" x 3/4"	036340	35	1.00	\$4.75
3 1/2" x 3/4"	036341	30	1.25	\$5.15
4 1/2" x 3/4"	036342	20	1.50	\$6.30
6 5/8" x 1"	036343	5	16.0	\$18.96



Hanger Bolt Hinges

Steel - Galvanized
With 2 Nuts

Description	Part no.	Per Drum	Wt. Each	Price
5/8" x 6"	013904	250	.64	\$2.00
5/8" x 10"	013905	200	.74	\$3.00
3/4" x 6"	036329	125	1.07	\$2.45
3/4" x 12"	036326	125	1.23	\$4.20



Lag Screw Hinges

Steel - Galvanized

Description	Part no.	Per Drum	Wt. Each	Price
5/8" x 4 1/2"	013802	300	.52	\$1.55
5/8" x 6"	013803	200	.62	\$2.50



180° Industrial Hinges

Pressed Steel - Galvanized

Description	Part no.	Per Sack	Wt. Each	Price
3 1/2" x 1 5/8" or 1 7/8"	015604	10	4.00	\$7.78
4 1/2" x 1 5/8" or 1 7/8"	015606	10	4.50	



Flat Back Hinges

Pressed Steel - Galvanized

Description	Part no.	Per Sack	Wt. Each	Price
Flat Plate Pin Hinge	014360	100	.45	\$2.50



Gate Hinge Closers

Pressed Steel - Galvanized

Gravity Type

NOTE: Bolts included.

Requires 2" spacing between Gate Post and Gate Frame.

Description	Part no.	Per Sack	Wt. Each	Price
1 7/8" x 1 3/8"	017501	10	2.79	\$11.44
2 3/8" x 1 3/8"	017502	10	2.92	\$11.62



Gate Closers

Pressed Steel - Galvanized

Heavy Duty

NOTE: Bolts included.

Requires 2" spacing between Gate Post and Gate Frame.

Description	Part no.	Per Sack	Wt. Each	Price
2 3/8" x 1 3/8"	017432	10	2.30	\$22.08
2 7/8" x 1 5/8"	017503	10	2.70	\$21.66
2 7/8" x 1 7/8"	017504	10	2.75	\$24.82



Self Closing Device

Pressed Steel - Galvanized
Residential

Description	Part no.	Per Sack	Wt. Each	Price
1 7/8" x 1/2"	017517	1	1.00	



Fork Latch Assembly

Pressed Steel - Galvanized
Regular

NOTE: This item assembled, bolts included.

Description	Part no.	Per Sack	Wt. Each	Price
1 3/8" x 1 3/8"	016703	25	.84	\$1.75
1 3/8" x 1 7/8"	016704	25	.86	\$1.95
1 3/8" x 2 3/8"	016705	25	.88	\$2.20



Fork Latch Assembly - Heavy Duty

Pressed Steel - Galvanized
Heavy Duty

NOTE: This item assembled, bolts included.

Description	Part no.	Per Sack	Wt. Each	Price
1 3/8" x 1 7/8"	016752	25	.90	\$2.50
1 3/8" x 2 3/8"	016753	25	1.02	\$2.75
1 3/8" x 2 7/8"	016754	25	1.08	\$3.00
1 5/8" x 1 7/8"	016756	25	1.01	\$2.25
1 5/8" x 2 3/8"	016757	25	1.00	\$2.50
1 5/8" x 2 7/8"	016758	25	1.08	\$2.75
1 5/8" x 3 1/2"	016759	25	1.20	\$3.00



Fork Latch Assembly

Malleable Iron - Galvanized

NOTE: This item assembled, bolts included.

Description	Part no.	Per Sack	Wt. Each	Price
1 5/8" x 2 7/8"	016606	25	1.61	\$4.00
1 5/8" x 3 1/2"	016607	25	1.89	\$4.25



Flat-Back Fork Latch Assembly

Pressed Steel - Galvanized

NOTE: This item assembled, bolt included, without mounting fasteners.

Description	Part no.	Per Sack	Wt. Each	Price
1 3/8" Fork	016710	25	.56	\$1.30



Flat-Back Butterfly Latch

Pressed Steel - Galvanized

Description	Part no.	Per Sack	Wt. Each	Price
1 3/8" Gate Frame	017310	25	.88	\$2.35



Butterfly Latches

Pressed Steel Ear

NOTE: This item assembled, bolts included.

Description	Part no.	Per Sack	Wt. Each	Price
1 3/8" x 1 7/8"	017303	25	.89	\$4.45
1 3/8" x 2 3/8"	017304	25	.90	\$5.25



Magna-Latch

Magnetic Pool Gate Latches

*Magnetically triggered
No mechanical resistance to closure
Fits externally (no milling)
Fasteners included*

*Fully adjustable
Child-resistant
Key lockable (2 models)*

Description	Part no.	Qty.	Weight	Price
Top Pull	044430	1	.97	\$59.07
Vertical Pull	044432	1	.68	\$56.00
Round Post Adapter Kit for 1 7/8" or 2 3/8"	044477	1	.39	\$6.66



Auto Latch

Glass-Filled Nylon Plastic

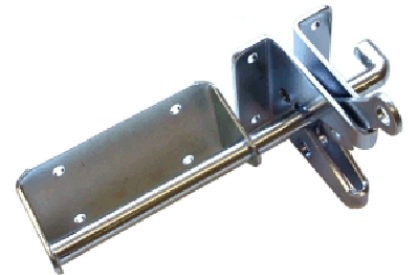
Other sizes available on special quotation.

Description	Part no.	Per Sack	Wt. Each	Price
1 3/8" x 1 3/8"	017300	1	1.00	\$26.98
1 3/8" x 1 7/8"	017301	1	1.00	\$26.95
1 3/8" x 2 3/8"	017302	1	1.00	\$26.98



Finger Latch - Flat

Description	Part no.	Qty.	Weight	Price
Zinc Finish	010926	50	.46	\$3.25



Finger Latch Assembly

Pressed Steel - Galvanized

NOTE: Bolts included.

Description	Part no.	Per Sack	Wt. Each	Price
Finger - 1 3/8"	036375	100	.75	\$1.86
Catch - 1 7/8"	036378	200	.40	\$1.58
Catch - 2 3/8"	036380	150	.55	\$1.54



Frost Free Latch Assembly

Malleable Iron - Galvanized

For Double Drive Gate

NOTE: Does not require Drop Rod.

Description	Part no.	Per Sack	Wt. Each	Price
1 5/8" Frame	017205	10	2.83	\$6.50



Rolo Latches

Pressed Steel - Galvanized

For Rolling Gate

Description	Part no.	Per Sack	Wt. Each	Price
1 5/8" Frame w/o Bands	017410	10	2.35	\$5.00



Drop Pin Latch

Pressed Steel - Galvanized

Description	Part no.	Per Sack	Wt. Each	Price
Drop Pin w/chain	036382	1	2.00	\$3.10
Guides	036383	1	.50	\$1.16
Locking U	DPLU	1	.50	\$1.16



E-Z Latch Residential Drop Rod

Steel Rod & Guides - Galv.

Aluminum Fork

Description	Part no.	Per Sack	Wt. Each	Price
1 3/8" x 36" Assembly	016901	10	2.17	\$8.25
Assembly includes: 1 Rod w/Fork, 2 Guides, w/Bolts				
1 3/8" x 42" Assembly	016902	10	2.31	\$7.88



Residential Cane-Type Latch

Steel Rod & Guides - Galv.

Description	Part no.	Per Sack	Wt. Each	Price
1 3/8" x 36" Assembly	016905	25	2.88	\$2.92
Assembly includes: 1 Rod w/Fork, 2 Guides, w/Bolts				
1 3/8" x 44" Assembly	016906	25	3.29	\$7.47



Industrial Drop Rod Standard

Pressed Steel - Galvanized

NOTE: Optional with 4 Guides and 2 Forks at extra cost.

Description	Part no.	Per Sack	Wt. Each	Price
Assembly includes: 1 Fork, 3 Guides, w/Bolts, 1 3/8" x 7' Drop Rod - w/Fork welded to Rod				
1 5/8" Assembly with Drop Rod	IDR158	10	12.00	\$20.43



Lock N' Latch Heavy Duty

Pressed Steel - Galvanized

For Rolling Gates

Description	Part no.	Per Sack	Wt. Each	Price
Latches to 1 5/8" or 1 7/8" O.D. Frame - For Single Rolling Gate				
Offset	017371	10	1.50	\$8.33
Latches to 1 5/8" or 1 7/8" O.D. Frame - For Single or Double Rolling Gate				
Standard	017372	10	1.50	



Cantilever Gate Stop

Description	Part no.	Qty.	Weight	Price
3 1/2"	018509	1	4.25	\$36.11



Cantilever Latches

Pressed Steel - Galvanized

NOTE: 1 5/8" or 1 7/8" Gate Frame, bolts included.
Approximately 4 1/2" from face of post to centre of gate frame.

Description	Part no.	Per Sack	Wt. Each	Price
3 1/2" Post	017374	10	4.05	\$13.94



Spring Latch

Pressed Steel - Galvanized
Use with Latch Catch shown below.

Description	Part no.	Per Sack	Wt. Each	Price
1 3/8" Gate Frame	016101	25	.68	\$5.30



Latch Catches

Spring Latch Receivers
Pressed Steel - Galvanized
Use with Spring Latch shown above.

Description	Part no.	Per Sack	Wt. Each	Price
1 7/8" Band	016201	50	.34	\$1.99
2 3/8" Band	016202	50	.36	\$1.83
Universal	016401	100	.17	\$1.66



Kennel Latch

Pressed Steel - Galvanized

Description	Part no.	Per Sack	Wt. Each	Price
1 3/8"	016550	50	1.00	\$1.10



Kennel Hinge

Pressed Steel - Galvanized

Description	Part no.	Per Sack	Wt. Each	Price
1 3/8"	014451	100	.75	\$1.00



Panel Clamps

Pressed Steel - Galvanized
NOTE: Without bolts. Approximately 3/8" spacing between frames.

Description	Part no.	Per Sack	Wt. Each	Price
	Use 3/8" x 2 1/4" Carriage Bolt			
1 3/8" x 1 3/8"	015516	100	.50	\$1.59
	Use 3/8" x 2 1/2" Carriage Bolt			
1 5/8" x 1 5/8"	015517	50	.67	\$2.17



Gate Clips

Pressed Steel - Galvanized

Description	Part no.	Per Sack	Wt. Each	Price
1 3/8"	015201	250	.13	\$0.24
1 5/8"	015205	250	.16	\$0.34
1 3/8" or "C" Type	015208	250	.13	\$0.24



Gate Scrolls

Three-Piece Pressed Steel
Galvanized

Description	Part no.	Per Sack	Wt. Each	Price
18"	014501	10	1.12	\$2.20
24"	014502	10	1.44	\$1.69



Gate Keeper

Duckbill
NOTE: Bolts included.

Description	Part no.	Per Sack	Wt. Each	Price
1 5/8" Malleable	015901	20	2.22	\$4.79
1 5/8" Pressed Steel	015904	20	1.00	\$3.62



Gate Chain Holdback

Pressed Steel - Galvanized

Description	Part no.	Per Sack	Wt. Each	Price
3/16" x 16"	GCHB1	1	2	\$3.06



Drive-In Plugs

Sand-cast Aluminum

Description	Part no.	Per Sack	Wt. Each	Price
1 3/8"	011213	100	.08	\$0.53



Kwikkee Gate latch

Description	Part no.	Qty.	Weight	Price
Kwikkee Gate Latch	036417	1	1.00	\$6.95



Drive-In Plugs

Sand-cast Aluminum

Description	Part no.	Per Sack	Wt. Each	Price
1 5/8"	011214	100	.10	\$0.70
1 7/8"	011215	100	.13	\$0.83

Safe-T Line Track Brackets

Pressed Steel - Galvanized
Heavy Duty

NOTE: Use with 1 5/8" O.D. Pipe Track. Bolts included.

Description	Part no.	Per Sack	Wt. Each	Price
For 1 5/8" or 1 7/8" Post	018561	20	2.55	\$5.25
For 2 3/8" or 2 7/8" Post	018562	20	2.65	\$5.15
For 3 1/2" Post	018631	20	2.92	\$7.10



Flat-Back Line Track Bracket

For Flat
Surface/Block Walls

Pressed Steel - Galvanized

NOTE: Use with 1 5/8" O.D. Pipe Track.

Description	Part no.	Per Sack	Wt. Each	Price
Flat Back	018534	20	1.93	\$3.75

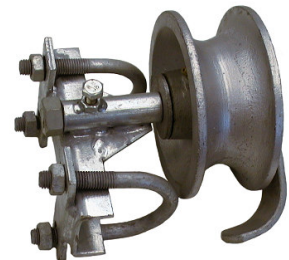


Safe-T Rear Wheel for Pipe Track

Malleable Iron - Galvanized
Heavy Duty

*NOTE: Use with 1 5/8" O.D. Pipe Track.
Bolts included, with Grease Fitting.*

Description	Part no.	Per Sack	Wt. Each	Price
5" Wheel	018441	10	5.75	\$19.45
* Universal Holding Bracket Assembly for 1 5/8" or 1 7/8" Frame				
5" Wheel * with Bracket Assembly	018442	4	7.92	\$21.00



Track Wheel Clamp

Heavy Duty

Description	Part no.	Per Sack	Wt. Each	Price
1 5/8" or 1 7/8"		25	1.75	

Brackets for Rear Wheel

Pressed Steel - Galvanized

Description	Part no.	Per Sack	Wt. Each	Price
1 5/8" Gate Frame	018410	25	.66	\$0.82



Cantilever Wheels - Loadmaster

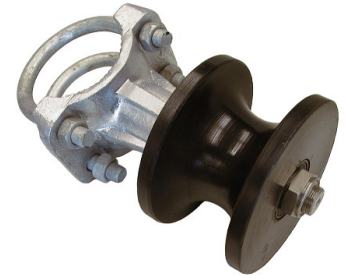
Galvanized

Description	Part no.	Per Sack	Wt. Each	Price
3 1/2"	018390	4	16.30	\$43.55
4 1/2"	018388	4	17.00	\$42.31



PVC Cantilever Wheels

Description	Part no.	Qty./Case	Weight	Price
3 1/2"	036408	4	16.00	\$80.92
4 1/2" x 2 3/8" Loadmaster	018366	1		\$111.72



Rubber-Tired Wheels Only

Steel Hub with 5/8" Bearing

Description	Part no.	Per Sack	Wt. Each	Price
6" Wheel (Hard)	017602	6	2.17	\$4.64
8" Wheel (Hard)	017604	6	3.50	\$7.00
8" Wheel (Pneumatic)	017615	1	2.90	\$21.75



Single-Wheel Carrier

Weld-on Type, 5/8" Axle

Pressed Steel - Galvanized

NOTE: Bolts included.

Description	Part no.	Per Sack	Wt. Each	Price
1 5/8" Frame, 6" Wheel	018201	4	4.80	\$15.91
1 5/8" Frame, 8" Wheel	018202	4	7.21	\$20.10



Swivel Wheels for Swing Gate

Pressed Steel - Galvanized
For Pipe

NOTE: Bolts included.

Description	Part no.	Per Sack	Wt. Each	Price
Fits 1 3/8" Frame	018361	4	4.62	\$12.50
Fits 1 5/8" Frame	018362	4	4.71	\$13.50
Flat-back	018364	4	5.00	\$14.07



Industrial Double-Wheel Carrier

Pressed Steel - Galvanized

NOTE: Bolts included.

Description	Part no.	Per Sack	Wt. Each	Price
1 5/8" or 1 7/8" Frame, 6" Steel-Hub Wheel	018301	4	8.50	\$21.96
1 5/8" or 1 7/8" Frame, 8" Steel-Hub Wheel	018302	4	12.38	\$28.50
Carrier Only	037082	4	5.34	\$10.00

Clamp-on Type,
5/8" Axle, 12"
Wheel Base



Pneumatic Double-Wheel Carrier

Pressed Steel - Galvanized

NOTE: Bolts included.

Description	Part no.	Per Sack	Wt. Each	Price
1 5/8" or 1 7/8" Frame, 8" Wheel	018344	1	11.70	\$50.00

Clamp-on Type,
5/8" Axle, 12"
Wheel Base,
Pneumati



Lokk Latch - Round Post

Frame Sizes: 1 3/8", 1 5/8"
Post Sizes: 1 7/8", 2 3/8", 2 7/8"

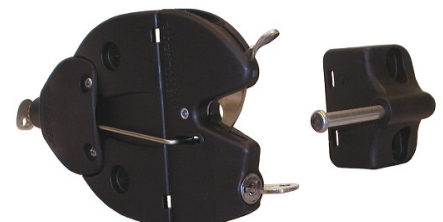
Description	Part no.	Qty.	Weight	Price
Lokk-Latch	SP128K	1	1	\$31.50



Lokk-Latch 2-way Entry - Round Post

Frame Sizes: 1 3/8", 1 5/8"
Post Sizes: 1 7/8", 2 3/8", 2 7/8"

Description	Part no.	Qty.	Weight	Price
Lokk-Latch	SP128M	1	1	\$32.89



Tru-Close Hinge Type 2 - Round Post

Frame Sizes: 1 3/8" only
 Post Sizes: 1 7/8", 2 3/8", 2 7/8"

Description	Part no.	Qty.	Weight	Price
Mini-Multi Round Hinge	SP128N	1pr	1.2	\$37.60



Tru-Close Hinge - Round Post

Frame Sizes: 1 3/8", 1 5/8"
 Post Sizes: 1 7/8", 2 3/8", 2 7/8"

Description	Part no.	Qty.	Weight	Price
Tru-Close Hinge Round	198012	1pr	2	\$51.79



Aiphone Entry System 1 - Intercom

External Mount

Description	Weight	Qty	Price
LE-D, LEM-1DL	2	1	\$154.52



Aiphone Entry System 2 - Intercom

Flush Mount

Description	Weight	Qty	Price
LE-DA, LEM-1DL	2	1	\$214.13



Pre-formed Loop / EMX Detector 4' x 8'

Description	Weight	Qty	Price
EMX PR-48	5	1	\$219.34



Wireless Entry Key Pad - Liftmaster

976LM

Description	Weight	Qty	Price
976LM	1	1	\$56.25



Timer - 24 Hour

Description	Weight	Qty	Price
Altronix Single-Channel	1	1	\$142.07

Road Probe / Car Sense Detector

Description	Weight	Qty	Price
EMX Road Probe	10	1	\$229.84



Magnetic Lock

Description	Weight	Qty	Price
Mag Lock	5	1	\$247.52



Photo Cell - FL130B (2Pcs)

Description	Weight	Qty	Price
FL130B	1	1pr.	\$88.59



Linear Access Pad - AKI

Description	Weight	Qty	Price
2-Channel Digital Keypad	5	1	\$204.00



Crown Jewel - Sentex Phone Entry System

Description	Weight	Qty	Price
Access Pad	10	1	1,384.75
with Camera & Monitor	30	1	1,945.00



Stand - Powder Coated Black

Description	Weight	Qty	Price
Stand	15	1	\$135.00



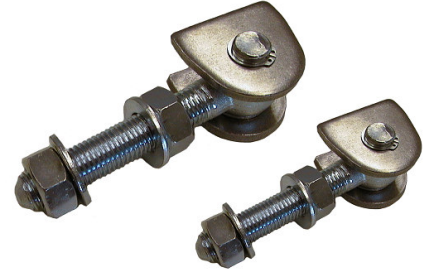
Remote

Description	Weight	Qty	Price
Mitto 2-channel	.5	1	\$31.25



Weld on Gate Hinges

Description	Weight	Qty	Price
m 24 - 3/4"	2	1	\$19.17
m16 - 5/8"	1	1	\$17.00



Residential Single Swing Gates

Frame Type

1 3/8"

Opening	3'	42"	4'	5'	6'
8'	\$0.00				
8'		\$0.00			
10'			\$0.00		
10'				\$0.00	
4'					\$0.00
5'					\$0.00
8'	\$0.00				



Residential Double Swing Gates

Frame Type

1 3/8"

Opening	3'	42"	4'	5'	6'
10'					
12'					
14'					
16'					
18'					
20'					
24'					



Industrial Single Swing Gates

Frame Type

1 5/8"

Opening	6'	6' + B.W.	8' + B.W.	7' + B.W.	8'
3'					
4'					
6'					
8'					
10'					
12'					
14'					
16'	\$190.00	\$200.00	\$180.00	\$190.00	\$170.00
20'	\$220.00	\$230.00	\$205.00	\$220.00	\$200.00
24'	\$270.00	\$290.00	\$260.00	\$280.00	\$300.00



Industrial Double Swing Gates

Frame Type

1 5/8"

Opening	6'	6' + B.W.	8' + B.W.	7' + B.W.	8'
10'					
12'					
14'					
16'					
18'					
20'					
22'					
28'					
30'					



Industrial Slide Gates

Frame Type

1 5/8"

Opening	6'	6' + B.W.	8' + B.W.	7' + B.W.	8'
10'					
12'					
14'					
16'					
18'					
20'					
22'					
24'					
26'					
28'					
30'					



Cantilever Gates

Frame Type

2 3/8"

Opening	6'	6' + B.W.	8' + B.W.	7' + B.W.	8'
10'					
12'					
14'					
16'					
18'					
20'					
22'					
24'					
26'					
28'					
30'					



Carriage Wheel

350

Description	Weight	Qty	Price
Grande	96	1	\$371.62
Piccolo	26	1	\$191.70
Mini	12	1	\$118.00

Track - 20' Section

345

Description	Weight	Qty	Price
Grande	300	20'	\$504.34
Piccolo	150	20'	\$250.70
Mini	80	20'	\$176.96



End Wheel

347

Description	Weight	Qty	Price
Grande	18	1	\$47.20
Piccolo	15	1	\$35.40
Mini	5	1	\$23.60



End Cup

346

Description	Weight	Qty	Price
Grande	18	1	\$47.20
Piccolo	15	1	\$32.44
Mini	5	1	\$20.65



Guide Plate

Description	Weight	Qty	Price
220 mm	5	1	\$23.60
350 mm	12	1	\$38.34



Guide Roller

Description	Weight	Qty	Price
Guide Roller	1	1	\$7.05

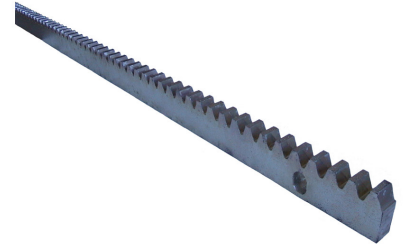


Bolts - Galvanized

Description	Weight	Qty	Price
m 16	1.5	1	\$10.33
m 20	2.5	1	\$11.80

Rack x 2m (6'-7")

Description	Weight	Qty	Price
Rack	10	1	\$32.44



Pyramid Post Cap

Description	Part no.	Weight EA	Price
4" Square - external	521884	0.15	\$1.36
5" Square - external	522154	0.22	\$1.84
5" Square - internal	521824	0.22	\$1.57



French Gothic Post Cap

Description	Part no.	Weight EA	Price
4" Square	521774	0.84	\$5.09
5" Square	521784	1.00	\$6.34



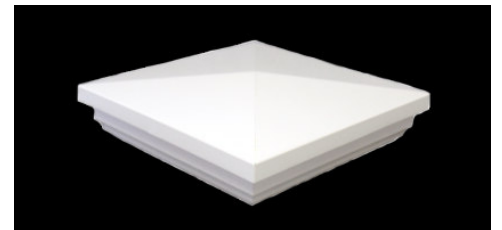
Ball Post Cap

Description	Part no.	Weight EA	Price
4" Square	521794	0.40	\$4.45
5" Square	521804	0.43	\$5.04



New England Post Caps

Description	Part no.	Weight EA	Price
4" Square	520034	0.60	\$4.29
5" Square	520044	0.75	\$5.72



Picket tops

Description	Part no.	Weight EA	Price
1 1/2" Pointed	521844	0.04	\$0.49
3" Pointed	522364	0.06	\$0.81
3" Dog Ear	521866	0.04	\$0.87



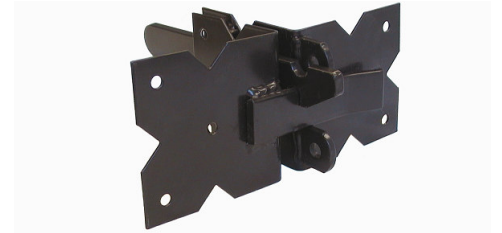
Hinges

Description	Part no.	Weight EA	Price
2 1/2"h x 2 1/2"w - 1/2"dia STD	522117	2.61	\$50.13
3 1/2"h x 3 1/2"w - 5/8"dia HVY	522140	4.97	\$70.80



Hinges - Latch

Description	Part no.	Weight EA	Price
1-Way, 2 1/2"h x 2 1/2"w STD	522116	1.18	\$23.30
1-Way, 3 1/2"h x 3 1/2"w HVY	522150	2.20	\$35.61
2-Way, 3 1/2"h x 3 1/2"w HVY	522118	2.80	\$51.31



Drop Pin Kits

Description	Part no.	Weight EA	Price
3/4" sq x 24" STD	522170	14.00	\$49.06
3/4" sq x 34" Ranch Rail	522160	14.00	\$74.96



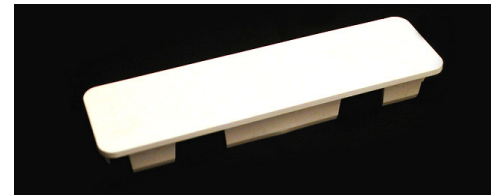
Fasteners

Description	Part no.	Weight EA	Price
#8 x 3/4" Screw	522105	0.030	\$0.06
#8 x 1 1/2" Screw	522115	0.010	\$0.05
#10 x 2 1/2" Screw (White)	522114	0.020	\$0.13
Screw Caps	522120	0.003	\$0.08
Screw Washer	522125	0.001	\$0.08
3/16" Pop Rivets (White)	522130	0.003	\$0.09



Rail Caps

Description	Part no.	Weight EA	Price
1 1/2" x 5 1/2" Rail Cap	522164	0.50	\$0.83



Rail Brackets

Description	Part no.	Weight EA	Price
1 1/2" x 5 1/2" Side Rail Brkt	52809	0.50	\$2.09
2" x 3 1/2" End Rail Brkt	52810	0.16	\$2.99



Ranch Rail Clips

Description	Part no.	Weight EA	Price
Clip for 1 1/2" x 5 1/2" rail	52808	0.02	\$0.40

Missile Post Adapter

Description	Part no.	Weight EA	Price
4" Square Adaptor	521894	5.13	\$35.85
5" Square Adaptor	522144	4.73	\$36.77

Unrouted Posts

Description	Part no.	Weight EA	Price
4" x 4" x 60"	522050	7.40	\$12.12
4" x 4" x 66"	522054	7.90	\$12.92
4" x 4" x 72"	522055	8.88	\$14.54
4" x 4" x 78"	522060	9.60	\$15.75
4" x 4" x 84"	522065	10.36	\$16.96
4" x 4" x 96"	522066	11.84	\$19.39
5" x 5" x 60"	522070	9.00	\$15.30
5" x 5" x 84"	522075	12.06	\$21.42
5" x 5" x 96"	522080	14.40	\$24.48
5" x 5" x 108"	522085	16.20	\$27.53
5" x 5" x 120"	520134	18.00	\$30.59
5" x 5" x 132"	520144	19.80	\$33.65



Blank Rail Profiles

Description	Part no.	Weight EA	Price
2" x 3 1/2" x 71 1/2"	521956	4.91	\$9.21
2" x 3 1/2" x 89 1/2"	521958	6.15	\$11.39
2" x 3 1/2" x 95 1/2"	521960	6.56	\$12.12
2" x 3 1/2" x 144"	524384	10.20	\$17.04
2" x 3 1/2" x 192"	524394	13.60	\$22.71
1 3/4" x 1 3/4" x 144"	524494	3.95	\$8.78
1 3/4" x 1 3/4" x 192"	524374	5.26	\$11.71



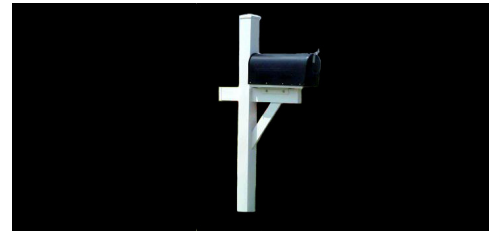
Panel Rails

Description	Part no.	Weight EA	Price
2" x 3 1/2" x 71 1/2" Drilled Picket	524794	5.36	\$10.32
2" x 3 1/2" x 71 1/2" Drilled Wide Picket	524904	5.60	\$10.16
1 1/2" x 5 1/2" x 95 1/2" Skived (Privacy)	524974	6.61	\$13.71
1 3/4" x 1 3/4" x 95 1/2" Skived (Lattice)	529194	2.79	\$8.22
2" x 3 1/2" x 93 1/2" Skived (Privacy Arched)	529574	6.76	\$12.70



Mail Box Post

Description	Part no.	Weight EA	Price
Mail Box Post	522034	18.00	\$62.07



Glue

Description	Part no.	Weight EA	Price
1.5 oz. tube	52806	0.09	\$2.69
8 oz. tube	52805	0.50	\$9.23



Notching Tool

Description	Part no.	Weight EA	Price
Notching Tool	52800	3.40	\$178.73



Wide Picket Panels

1 - Panel x 6'-0 1 - Cap (4"x4") 1 - Post (4"x4")

Description	Part no.	Weight	Opening	Price
3'	C-4-1			\$115.84
4'	C-4-2			\$137.22
5'	C-4-3			\$151.54

Wide Picket Gates

C/W Gate hardware

Description	Part no.	Weight	Opening	Price
3'h x 3'w	521104	20.30	36"	\$252.59
3'h x 4'w	521114	26.20	48"	\$271.19
4'h x 3'w	521164	24.10	36"	\$257.74
4'h x 4'w	521174	31.10	48"	\$274.40
5'h x 3'w	521184	33.90	36"	\$293.55
5'h x 4'w		35.90	48"	\$311.09

Arch II Panels

1 - Panel x 6'-0 1 - Cap (4"x4") 1 - Post (4"x4")

Description	Part no.	Weight	Opening	Price
3'h	523024	24.30		\$114.35
4'h	523034	26.10		\$135.66
5'h	523044	28.00		\$151.54



Arch II Gates

C/W Gate Hardware

Description	Part no.	Weight	Opening	Price
3'h x 3'w	523144	20.80	37"	\$276.80
3'h x 4'w	523154	26.70	49"	\$304.00
4'h x 3'w	523174	22.70	37"	\$288.00
4'h x 4'w	523184	29.20	49"	\$316.80
5'h x 3'w	523204	24.60	37"	\$294.40
5'h x 4'w	523214	31.60	49"	\$327.49

Privacy Panels

1 - Panel x 6' 1 - Cap 1 - Post (5"x5")

Description	Part no.	Weight	Opening	Price
4'	522174	57.18		\$116.16
5'	522184	71.48		\$139.25
6'	522194	85.78		\$168.80



Privacy Gates

Description	Part no.	Weight	Opening	Price
4'h x 3'w				\$267.05
4'h x 4'w				\$283.49
5'h x 3'w	522384	53.40	37 1/2"	\$341.88
5'h x 4'w	522394	71.20	49 1/2"	\$360.97
6'h x 3'w	522204	64.08	37 1/2"	\$364.23
6'h x 4'w	522214	85.44	49 1/2"	\$386.92

Privacy Panels C/W Lattice

1 - Panel x 6'-0 1 - Cap 1 - Post (5"x5")

Description	Part no.	Weight	Opening	Price
5'				\$153.68
6'				\$181.14

Privacy gates C/W Lattice & Hardware

Description	Part no.	Weight	Opening	Price
5'h x 3'w				\$363.64
5'h x 4'w				\$387.07
6'h x 3'w				\$386.53
6'h x 4'w				\$415.00

Scallop II Panels

1 - Panel x 6'-0 1 - Cap (4"x4") 1 - Post (4"x4")

Description	Part no.	Weight	Opening	Price
3'h	523264	24.30		\$111.84
4'h	523274	26.10		\$131.76
5'h	523284	28.00		\$150.24



Scallop II Gates

Description	Part no.	Weight	Opening	Price
3'h x 3'w	523474	20.80	37"	\$256.00
3'h x 4'w	523484	26.70	49"	\$280.00
4'h x 3'w	523504	22.70	37"	\$262.40
4'h x 4'w	523514	29.20	49"	\$288.00
5'h x 3'w	523534	24.60	37"	\$270.40
5'h x 4'w	523544	31.60	49"	\$297.23

Lawn Rails

Description	Part no.	Weight	Opening	Price
7/8" x 6" x 16'	522022	7.52		\$24.13



Lawn Rail Posts, 2-rail

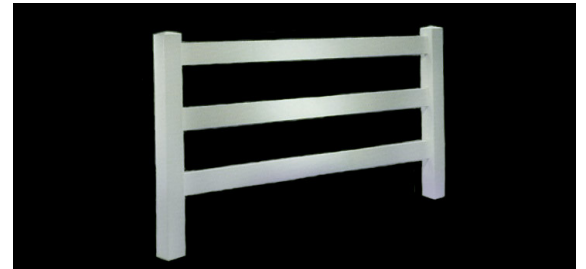
Description	Part no.	Weight	Height	Price
2-rail, Line 5'	521364	7.40	34"	\$16.99
2-rail, End 5'	521374	7.40	34"	\$16.99
2-rail, Corner 5'	521384	7.40	34"	\$16.99

Lawn Rail Posts, 3-rail

Description	Part no.	Weight	Height	Price
3-rail, Line 7'	521404	10.36	52"	\$22.72
3-rail, End 7'	521414	10.36	52"	\$22.72
3-rail, Corner 7'	521424	10.36	52"	\$22.72

Ranch Rails

Description	Part no.	Weight	Opening	Price
1 1/2" x 5 1/2" x 16'	521594	15.04		\$22.22



Ranch Rail Posts, 2-Rail

Description	Part no.	Weight	Height	Price
2-rail, Line 5" x 60"	521454	9.00	3'	\$16.53
2-rail, End 5" x 60"	521464	9.00	3'	\$16.53
2-rail, Corner 5" x 60"	521474	9.00	3'	\$16.53
2-rail, 3-Way 5" x 60"	521484	9.00	3'	\$16.53

Ranch Rail Posts, 3-Rail

Description	Part no.	Weight	Height	Price
3-rail, Line 5" x 84"	521504	12.60	54"	\$19.76
3-rail, End 5" x 84"	521514	12.60	54"	\$19.76
3-rail, Corner 5" x 84"	521524	12.60	54"	\$19.76
3-rail, 3-Way 5" x 84"	521534	12.60	54"	\$19.76

Ranch Rail Posts. 4-Rail

Description	Part no.	Weight	Height	Price
4-rail, Line 5" x 84"	521554	12.60	54"	\$20.56
4-rail, End 5" x 84"	521564	12.60	54"	\$20.56
4-rail, Corner 5" x 84"	521574	12.60	54"	\$20.56
4-rail, 3-Way 5" x 84"	521584	12.60	54"	\$20.56

2-Rail Ranch Gates

Description	Part no.	Weight	Opening	Price
3'h x 4'w	521614	35.20	51"	\$277.46
3'h x 6'w	521624	50.60	75"	\$312.69
3'h x 8'w	521634	58.60	99"	\$325.28
3'h x 10'w	521644	67.70	123"	\$331.36

3-Rail Ranch Gates

Description	Part no.	Weight	Opening	Price
54"h x 4'w	521664	45.40	51"	\$290.83
54"h x 6'w	521674	67.70	75"	\$330.98
54"h x 8'w	521684	76.70	99"	\$350.14
54"h x 10'w	521694	87.10	123"	\$364.24

4-Rail Ranch Gates

Description	Part no.	Weight	Opening	Price
54"h x 4'w	521714	55.00	51"	\$316.16
54"h x 6'w	521724	83.90	75"	\$373.92
54"h x 8'w	521734	94.90	99"	\$386.08
54"h x 10'w	521744	103.90	123"	\$399.76

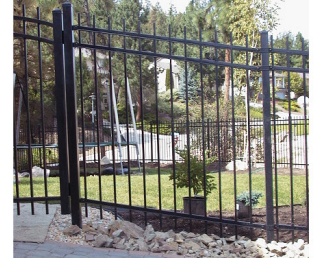
Spear Panels (3-Rail) - Racked (Classic) x 8'-0

Part no.	Height	Weight	Price
890182	4'	42	\$116.75
890202	6'	55	\$146.63



Picket Panels (3-Rail) - Racked (Genesis) x 8'-0

Part no.	Height	Weight	Price
890542	4'	42	\$116.73
890552	5'	49	\$131.68



Flattop Panels (3-Rail) - Racked (Majestic) x 8'-0

Part no.	Height	Weight	Price
890902	4'	42	\$116.75



Universal Bracket / End Rail

Part no.	Size	Weight	Qty	Price
	BB102	2"	.27	\$4.55


Corner Bracket

Part no.	Length	Weight	Qty	Price
1 1/4" Rail, 2" Post	444042	1.00	100	\$9.10


Line Bracket - Boulevard

Part no.	Size	Weight	Qty	Price
	BB104	2"	.35	\$5.05


Standard Mounting Bracket

Part no.	D1	Weight	Qty	Price
	BB101		.15	\$2.15


Swivel Bracket

Part no.	D1	Weight	Qty	Price
	BB103		.20	\$5.40


Quad-Flare Picket Top

Part no.	Size	Weight	Qty	Price
	AB301	5/8"	.15	\$1.45


Triad Picket Top

Part no.	Size	Weight	Qty	Price
	AB302	5/8"	.15	\$1.45



Ball Cap Post Top

Part no.	Size	Weight	Qty	Price
	HB508	2"	1.5	\$6.50



Corona Rings

Part no.	D1	Weight	Qty	Price
	AB103		.4	\$1.75



Plate Pintle

Description	Part No.	Weight	Qty	Price
5/8" Pin	444152	0.44	100	\$9.25

Auto Latch

Description	Part no.	Weight	Qty	Price
1 1/4" Sq. Frame 2" Sq. Post	44456	4.00	6	\$22.22



Magna-Latch Pool Gate Latch

Description	Part no.	Weight	Qty	Price
Top Pull	044430	0.97		\$59.07
Vertical Pull	044432	0.68		\$56.00
Side Pull	044434	0.27		\$23.28



Magna-Latch Post Adapter Kit

Description	Part no.	Weight	Qty	Price
Round Post Adapter Kit	44436	0.39		\$6.66



Post Base

Part no.	Size	Weight	Qty	Price
BB205	BB205	12"	2.2	\$22.50



Lokk-Latch - For Ornamental or Wood Gates

Description	Part No.	Qty	Weight	Price
System #1 Lokk-Latch	044473	1	.50	\$23.87
Round Post Adapter Kit for 1 7/8" or 2 3/8"	044477	1	.39	\$6.66



Sentry Latch

Description	Part no.	Weight	Qty	Price
Sentry Latch	SEN1	4.75	1	\$50.25



Weld on Gate Hinges

Part no.	Length	Weight	Qty	Price
	m16 - 5/8"	1	1	\$22.50
	m24 - 7/8"	2	1	\$23.50



Tru-Close Hinge - Type 1

Residential

Part no.	Part No.	Weight	Qty	Price
HB503P	044440	0.6	1 Pr.	\$25.69



Tru-Close Gate Hinge - Type 1

Description	Part no.	Weight	Qty	Price
3 1/2" x 2 1/2" Metal/Masonry to Wood	044440	0.54	1 Pr.	\$25.69



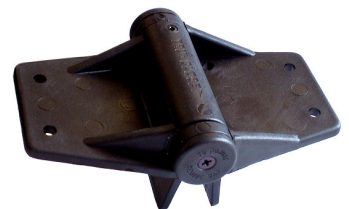
Tru-Close Gate Hinge - Type 2

Description	Part no.	Weight	Qty	Price
3 1/2" x 4 1/4" Metal/Masonry to Wood	044442	0.63	1 Pr.	\$23.89



Tru-Close Gate Hinge - Type 3

Description	Part no.	Weight	Qty	Price
3 1/2" x 5 1/2" Wood or Vinyl	044444	0.70	1 Pr.	\$30.41



Drop Rod

Description	Part no.	Weight	Qty	Price
5/8" x 18"	444162	1.00	4	\$10.50



2" x 2" Square Post (16Ga.) - Powder Coated

Part no.	Length	Weight	Qty	Price
WPB20069	69"	9.2	9.2	\$20.25
WPB20081	81"	10.8	10.8	\$22.50
WPB20093	93"	12.3	12.3	\$25.75
WPB20105	105"	14	14	\$29.75



2 1/2" x 2 1/2" Post (14 Ga.) - Powder Coated

Part no.	Length	Weight	Qty	Price
212146	6'	16.38	16.38	\$34.18
212147	7'	19.11	19.11	\$39.71
212148	8'	21.84	21.84	\$45.24
212149	9'	24.57	24.57	\$50.77
2121410	10'	27.3	27.3	\$56.30

3" x 3" Post (14 Ga.) - Powder Coated

Part no.	Length	Weight	Qty	Price
3146	6'	18.36	18.36	\$39.82
3147	7'	21.42	21.42	\$46.29
3148	8'	24.48	24.48	\$52.76
3149	9'	27.54	27.54	\$59.23
31410	10'	30.6	30.6	\$65.70

4" x 4" Post (11 Ga.) - Powder Coated

Part no.	Length	Weight	Qty	Price
4116	6'	37.92	37.92	\$81.14
4117	7'	44.24	44.24	\$93.83
4118	8'	50.56	50.56	\$106.52
4119	9'	56.88	56.88	\$109.21
41110	10'	63.2	63.2	\$131.90

4" x 4" Post (1/4" wall) Black - Powder Coated

Part no.	Length	Weight	Qty	Price
4146	6'	57	57	\$97.00
4147	7'	67	67	\$111.50

Part no.	Length	Weight	Qty	Price
	4148	8'	76	\$126.00
	4149	9'	85	\$140.50
	41410	10'	95	\$155.00

6" X 6" Post (1/4" wall) - Powder Coated

Part no.	Length	Weight	Qty	Price
	6146	6'	114	\$146.74
	6147	7'	134	\$169.53
	6148	8'	153	\$192.32
	6149	9'	172	\$215.11
	61410	10'	191	\$237.90

6" x 6" Post (3/16" wall) - Powder Coated

Part no.	Length	Weight	Qty	Price
	63166	6'	88	\$131.20
	63167	7'	102	\$151.40
	63168	8'	117	\$171.60
	63169	9'	131	\$191.80
	631610	10'	146	\$212.00

Spear Gates

3-Rail

Opening	Out-to-Out Dimensior	4'	5'	6'
42"	40"	\$160.11	\$152.27	\$149.13
4'	44 1/2"	\$161.68	\$153.84	\$150.70
5'	57 1/2"	\$207.21	\$194.65	\$188.37
6'	70 1/2"	\$211.92	\$199.36	\$193.08
7'	79 1/4"	\$249.59	\$237.03	\$230.75
8'	96 1/2"	\$252.73	\$240.17	\$233.89

Picket Gates

3-Rail

Opening	Out-to-Out Dimensior	4'	5'	6'
42"	40"	\$160.11	\$152.27	\$149.13
4'	44 1/2"	\$161.68	\$153.84	\$150.70
5'	57 1/2"	\$207.21	\$194.65	\$188.37
6'	70 1/2"	\$211.92	\$199.36	\$193.08
7'	79 1/4"	\$249.59	\$237.03	\$230.75
8'	96 1/2"	\$252.73	\$240.17	\$233.89

Flattop Gates

3-Rail

Opening	Out-to-Out Dimensior	4'	5'	6'
42"	40"	\$160.11	\$152.27	\$149.13
4'	44 1/2"	\$161.68	\$153.84	\$150.70
5'	57 1/2"	\$207.21	\$194.65	\$188.37
6'	70 1/2"	\$211.92	\$199.36	\$193.08
7'	79 1/4"	\$249.59	\$237.03	\$230.75
8'	96 1/2"	\$252.73	\$240.17	\$233.89

Straight Majestic (Flattop) - No Rings - Single Swing

Style (TW-1)

Opening	4' high	5' high	6' high
3'	\$295.00	\$250.00	\$295.00
4'	\$330.00	\$280.00	\$330.00
5'	\$410.00	\$350.00	\$410.00



Straight Majestic (Flattop) - c/w Rings - Single Swing

Style (TW-2)

Opening	4' high	5' high	6' high
3'	\$325.00	\$275.00	\$325.00
4'	\$355.00	\$300.00	\$355.00
5'	\$430.00	\$365.00	\$430.00

Straight Majestic (Flattop) - Double Rings - Single Swing

Style (TW-3)

Opening	4' high	5' high	6' high
3'	\$425.00	\$375.00	\$425.00
4'	\$455.00	\$400.00	\$455.00
5'	\$530.00	\$465.00	\$530.00

Straight Genesis (Picket) - No Rings - Single Swing

Style (TW-4)

Opening	4' high	5' high	6' high
3'	\$265.00	\$225.00	\$265.00
4'	\$295.00	\$250.00	\$295.00
5'	\$370.00	\$315.00	\$370.00



Straight Genesis (Picket) - c/w Finnials - Single Swing

Style (TW-4 with Spear, Triad or Quad-Flare)

Opening	4' high	5' high	6' high
3'	\$295.00	\$250.00	\$295.00
4'	\$330.00	\$280.00	\$330.00
5'	\$410.00	\$350.00	\$410.00



Straight Genesis (Picket) - c/w Rings - Single Swing

Style (TW-5)

Opening	4' high	5' high	6' high
3'	\$295.00	\$250.00	\$295.00
4'	\$330.00	\$280.00	\$330.00
5'	\$410.00	\$350.00	\$410.00

Straight Genesis (Picket) - c/w Rings & Finials - Single Swing

Style (TW-5 with Spear, Triad or Quad-Flare)

Opening	4' high	5' high	6' high
3'	\$325.00	\$275.00	\$325.00
4'	\$355.00	\$300.00	\$355.00
5'	\$430.00	\$365.00	\$430.00

Straight Genesis (Picket) - Double Rings - Single Swing

Style (TW-6)

Opening	4' high	5' high	6' high
3'	\$395.00	\$350.00	\$395.00
4'	\$430.00	\$380.00	\$430.00
5'	\$510.00	\$450.00	\$510.00

Straight Genesis (Picket) - Double Rings & Finials - Single Swing

Style (TW-6 with Spear, Triad or Quad-Flare)

Opening	4' high	5' high	6' high
3'	\$425.00	\$375.00	\$425.00
4'	\$455.00	\$400.00	\$455.00
5'	\$530.00	\$465.00	\$530.00

Arched Majestic (Flattop) - No Rings - Single Swing

Style (TW-7)

Opening	4' high	5' high	6' high
3'	\$305.00	\$260.00	\$305.00
4'	\$340.00	\$290.00	\$340.00
5'	\$420.00	\$360.00	\$420.00

Arched Majestic (Flattop) - c/w Rings - Single Swing

Style (TW-8)

Opening	4' high	5' high	6' high
3'	\$335.00	\$285.00	\$335.00
4'	\$365.00	\$310.00	\$365.00
5'	\$440.00	\$375.00	\$440.00

Arched Majestic (Flattop) - Double Rings - Single Swing

Style (TW-9)

Opening	4' - 5' high	5' - 6' high	6' - 7' high
3'	\$435.00	\$385.00	\$435.00
4'	\$465.00	\$410.00	\$465.00
5'	\$540.00	\$475.00	\$540.00

Arched Genesis (Picket) - No Rings - Single Swing

Style (TW-10)

Opening	4' - 5' high	5' - 6' high	6' - 7' high
3'	\$275.00	\$235.00	\$275.00
4'	\$305.00	\$260.00	\$305.00
5'	\$380.00	\$325.00	\$380.00



Arched Genesis (Picket) - c/w Finials - Single Swing

Style (TW-10 with Spear, Triad or Quad-Flare)

Opening	4' - 5' high	5' - 6' high	6' - 7' high
3'	\$305.00	\$260.00	\$305.00
4'	\$340.00	\$290.00	\$340.00
5'	\$420.00	\$360.00	\$420.00



Arched Genesis (Picket) - c/w Rings - Single Swing

Style (TW-11)

Opening	4' - 5' high	5' - 6' high	6' - 7' high
3'	\$305.00	\$260.00	\$305.00
4'	\$340.00	\$290.00	\$340.00
5'	\$420.00	\$360.00	\$420.00



Arched Genesis (Picket) - c/w Rings & Finnials - Single Swing

Style (TW-11 with Spear, Triad or Quad-Flare)

Opening	4' - 5' high	5' - 6' high	6' - 7' high
3'	\$335.00	\$285.00	\$335.00
4'	\$365.00	\$310.00	\$365.00
5'	\$440.00	\$375.00	\$440.00

Arched Genesis (Picket) - Double Rings - Single Swing

Style (TW-12)

Opening	4' - 5' high	5' - 6' high	6' - 7' high
3'	\$405.00	\$360.00	\$405.00
4'	\$440.00	\$390.00	\$440.00
5'	\$520.00	\$460.00	\$520.00

Arched Genesis (Picket) - Double Rings & Finnials - Single Swing

Style (TW-12 with Spear, Triad or Quad-Flare)

Opening	4' - 5' high	5' - 6' high	6' - 7' high
3'	\$435.00	\$385.00	\$435.00
4'	\$465.00	\$410.00	\$465.00
5'	\$540.00	\$475.00	\$540.00

Straight Majestic (Flattop) - No Rings - Double Swing

Style (TW-13)

Opening	4' high	5' high	6' high
10'	1,245.00	1,065.00	1,245.00
12'	1,298.00	1,110.00	1,298.00
14'	1,352.00	1,156.00	1,352.00
16'	1,405.00	1,201.00	1,405.00
18'	1,465.00	1,250.00	1,465.00
20'	1,515.00	1,293.00	1,515.00

Opening	4' high	5' high	6' high
24'	1,625.00	1,390.00	1,625.00

Straight Genesis (Picket) - No Rings - Double Swing

Style (TW-14)

Opening	4' high	5' high	6' high
10'	1,170.00	1,000.00	1,170.00
12'	1,210.00	1,035.00	1,210.00
14'	1,247.00	1,066.00	1,247.00
16'	1,290.00	1,101.00	1,290.00
18'	1,330.00	1,135.00	1,330.00
20'	1,370.00	1,168.00	1,370.00
24'	1,450.00	1,240.00	1,450.00



Straight Genesis (Picket) - c/w Finales - Double Swing

Style (TW-14 with Spear, Triad or Quad-Flare)

Opening	4' high	5' high	6' high
10'	1,245.00	1,065.00	1,245.00
12'	1,298.00	1,110.00	1,298.00
14'	1,352.00	1,156.00	1,352.00
16'	1,405.00	1,201.00	1,405.00
18'	1,465.00	1,250.00	1,465.00
20'	1,515.00	1,293.00	1,515.00
24'	1,625.00	1,390.00	1,625.00

Straight Majestic (Flatop) - c/w Rings - Double Swing

Style (TW-15)

Opening	4' high	5' high	6' high
10'	1,385.00	1,185.00	1,385.00
12'	1,440.00	1,230.00	1,440.00
14'	1,492.00	1,276.00	1,492.00
16'	1,545.00	1,321.00	1,545.00
18'	1,604.00	1,372.00	1,604.00
20'	1,665.00	1,423.00	1,665.00
24'	1,800.00	1,540.00	1,800.00

Straight Genesis (Picket) - c/w Rings - Double Swing

Style (TW-16)

Opening	4' high	5' high	6' high
10'	1,310.00	1,120.00	1,310.00
12'	1,350.00	1,155.00	1,350.00
14'	1,390.00	1,186.00	1,390.00
16'	1,430.00	1,221.00	1,430.00
18'	1,470.00	1,257.00	1,470.00
20'	1,520.00	1,298.00	1,520.00
24'	1,625.00	1,390.00	1,625.00

Straight Genesis (Picket) - c/w Rings & Finials - Double Swing

Style (TW-16 with Spear, Triad or Quad-Flare)

Opening	4' high	5' high	6' high
10'	1,385.00	1,185.00	1,385.00
12'	1,440.00	1,230.00	1,440.00
14'	1,492.00	1,276.00	1,492.00
16'	1,545.00	1,321.00	1,545.00
18'	1,604.00	1,372.00	1,604.00
20'	1,665.00	1,423.00	1,665.00
24'	1,800.00	1,540.00	1,800.00

Straight Majestic (Flattop) - Double Rings - Double Swing

Style (TW-17)

Opening	4' high	5' high	6' high
10'	1,585.00	1,385.00	1,585.00
12'	1,640.00	1,430.00	1,640.00
14'	1,692.00	1,476.00	1,692.00
16'	1,845.00	1,621.00	1,845.00
18'	1,904.00	1,672.00	1,904.00
20'	2,065.00	1,823.00	2,065.00
24'	2,200.00	1,940.00	2,200.00

Straight Genesis (Picket) - Double Rings - Double Swing

Style (TW-18)

Opening	4' high	5' high	6' high
10'	1,510.00	1,320.00	1,510.00
12'	1,550.00	1,355.00	1,550.00
14'	1,590.00	1,386.00	1,590.00
16'	1,730.00	1,521.00	1,730.00
18'	1,770.00	1,557.00	1,770.00
20'	1,920.00	1,698.00	1,920.00
24'	2,025.00	1,790.00	2,025.00

Straight Genesis (Picket) - Double Rings & Finnials - Double Swing

Style (TW-18 with Spear, Triad or Quad-Flare)

Opening	4' high	5' high	6' high
10'	1,585.00	1,385.00	1,585.00
12'	1,640.00	1,430.00	1,640.00
14'	1,692.00	1,476.00	1,692.00
16'	1,845.00	1,621.00	1,845.00
18'	1,904.00	1,672.00	1,904.00
20'	2,065.00	1,823.00	2,065.00
24'	2,200.00	1,940.00	2,200.00

Arched Majestic (Flattop) - No Rings - Double Swing

Style (TW-19)

Opening	4' - 5' high	5' - 6' high	6' - 7' high
10'	1,265.00	1,085.00	1,265.00
12'	1,318.00	1,130.00	1,318.00
14'	1,372.00	1,176.00	1,372.00
16'	1,425.00	1,221.00	1,425.00
18'	1,485.00	1,270.00	1,485.00
20'	1,535.00	1,313.00	1,535.00
24'	1,645.00	1,410.00	1,645.00

Arched Genesis (Picket) - No Rings - Double Swing

Style (TW-20)

Opening	4' - 5' high	5' - 6' high	6' - 7' high
10'	1,190.00	1,020.00	1,190.00
12'	1,230.00	1,055.00	1,230.00
14'	1,267.00	1,086.00	1,267.00
16'	1,310.00	1,121.00	1,310.00
18'	1,350.00	1,155.00	1,350.00
20'	1,390.00	1,188.00	1,390.00
24'	1,470.00	1,260.00	1,470.00



Arched Genesis (Picket) - c/w Finials - Double Swing

Style (TW-20 with Spear, Triad or Quad-Flare)

Opening	4' - 5' high	5' - 6' high	6' - 7' high
10'	1,265.00	1,085.00	1,265.00
12'	1,318.00	1,130.00	1,318.00
14'	1,372.00	1,176.00	1,372.00
16'	1,425.00	1,221.00	1,425.00
18'	1,485.00	1,270.00	1,485.00
20'	1,535.00	1,313.00	1,535.00
24'	1,645.00	1,410.00	1,645.00



Arched Majestic (Flattop) - c/w Rings - Double Swing

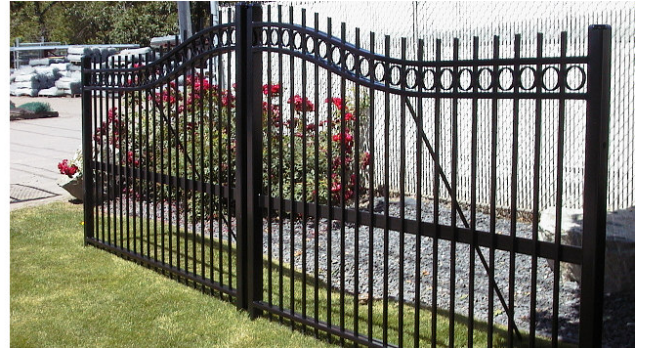
Style (TW-21)

Opening	4' - 5' high	5' - 6' high	6' - 7' high
10'	1,405.00	1,205.00	1,405.00
12'	1,460.00	1,250.00	1,460.00
14'	1,512.00	1,296.00	1,512.00
16'	1,565.00	1,341.00	1,565.00
18'	1,624.00	1,392.00	1,624.00
20'	1,685.00	1,443.00	1,685.00
24'	1,820.00	1,560.00	1,820.00

Arched Genesis (Picket) - c/w Rings - Double Swing

Style (TW-22)

Opening	4' - 5' high	5' - 6' high	6' - 7' high
10'	1,330.00	1,140.00	1,330.00
12'	1,370.00	1,175.00	1,370.00
14'	1,410.00	1,206.00	1,410.00
16'	1,450.00	1,241.00	1,450.00
18'	1,490.00	1,277.00	1,490.00
20'	1,540.00	1,318.00	1,540.00
24'	1,645.00	1,410.00	1,645.00



Arched Genesis (Picket) - c/w Rings & Finnials - Double Swing

Style (TW-22 with Spear, Triad or Quad-Flare)

Opening	4' - 5' high	5' - 6' high	6' - 7' high
10'	1,405.00	1,205.00	1,405.00
12'	1,460.00	1,250.00	1,460.00
14'	1,512.00	1,296.00	1,512.00
16'	1,565.00	1,341.00	1,565.00
18'	1,624.00	1,392.00	1,624.00
20'	1,685.00	1,443.00	1,685.00
24'	1,820.00	1,560.00	1,820.00



Arched Majestic (Flattop) - Double Rings - Double Swing

Style (TW-23)

Opening	4' - 5' high	5' - 6' high	6' - 7' high
10'	1,605.00	1,405.00	1,605.00
12'	1,660.00	1,450.00	1,660.00
14'	1,712.00	1,496.00	1,712.00
16'	1,865.00	1,641.00	1,865.00
18'	1,924.00	1,692.00	1,924.00
20'	2,085.00	1,843.00	2,085.00
24'	2,220.00	1,960.00	2,220.00

Arched Genesis (Picket) - Double Rings - Double Swing

Style (TW-24)

Opening	4' - 5' high	5' - 6' high	6' - 7' high
10'	1,530.00	1,340.00	1,530.00
12'	1,570.00	1,375.00	1,570.00
14'	1,610.00	1,406.00	1,610.00
16'	1,750.00	1,541.00	1,750.00
18'	1,790.00	1,577.00	1,790.00
20'	1,940.00	1,718.00	1,940.00
24'	2,045.00	1,820.00	2,045.00

Arched Genesis (Picket) - Double Rings & Finnials - Double Swing

Style (TW-24 with Spear, Triad or Quad-Flare)

Opening	4' - 5' high	5' - 6' high	6' - 7' high
10'	1,605.00	1,405.00	1,605.00
12'	1,660.00	1,450.00	1,660.00
14'	1,712.00	1,496.00	1,712.00
16'	1,865.00	1,641.00	1,865.00
18'	1,924.00	1,692.00	1,924.00
20'	2,085.00	1,843.00	2,085.00
24'	2,220.00	1,960.00	2,220.00

Small Pillar 12" x 12"

Description	Part No.	Price
12" x 12"		\$0.00


Large Pillar 21" x 21"

Description	Part No.	Price
Dark Brown		\$0.00
Grey		\$0.00
Tan		\$0.00



Privacy Slats

Beige, Green, White, Brown, Black,

NOTE: Only sold in full bags

8.5 slats perlineal foot. Packaging will be in plastic bags - 85 slats for 10 lineal feet.

Includes 10 lineal feet of locking channel.

Add digit to part no. for colour: 0 - Desert Sand 1 - Green 2 - White 3 - Brown 4 - Black 5 - Grey 6 - Redwood 7 - Royal Blue 8 - Blue

Fence Height	Part no.	Wt./Pkg.	Price
3'	20280	8.00	\$21.68
42"	20281	10.00	\$24.69
4'	20282	11.00	\$28.18
5'	20283	14.00	\$34.68
6'	20284	17.00	\$41.18
7'	20285	20.00	\$48.73
8'	20286	23.00	\$55.38
10'	20287	29.00	\$68.67
12'	20289	35.00	\$81.18
Additional Channel	20178	.05	\$0.97



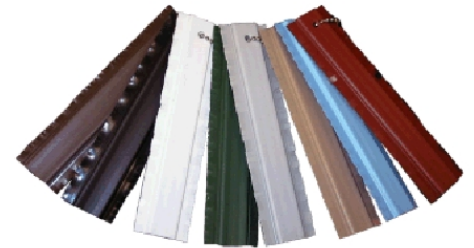
Fin/Slat

Beige, Green, White, Brown, Black,

NOTE: Only sold in full bags

8.5 slats perlineal foot. Packaging will be in plastic bags - 85 slats for 10 lineal feet.

Fence Height	Part no.	Wt./Pkg.	Price
3'	020400	9.00	\$24.88
4'	020402	12.00	\$33.20
5'	020403	15.00	\$41.49
6'	020404	18.00	\$49.78
8'	020406	25.00	\$66.38

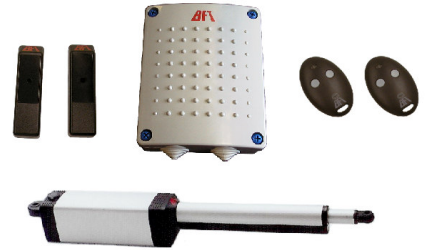


Phobos

Basic Kit

Includes 1 arm, 2 infra red safety beams, 1 external antenna, 2 transmitters, 1 Libra control board with built-in receiver.

Description	Max Leaf Weight	Max Gate Width	Price
Phobos BT Single	550 lbs.	up to 10'	\$880.00



Joint

Basic Kit

Includes 1 arm, 2 infra red safety beams, 1 external antenna, 2 transmitters, 1 Aries control board and 1Intric receiver.

Description	Max Leaf Weight	Max Gate Width	Price
Joint Single	441 lbs @ 8 ft	up to 10'	1,100.00



LUX

Basic Kit

Includes 1 arm, 2 infra red safety beams, 1 external antenna, 2 transmitters, 1 Rigel control board and 1 Intric receiver.

Description	Max Leaf Weight	Max Gate Width	Price
LUXGV2B Single	660 lbs.	up to 16'	1,240.00



Chamberlain Liftmaster

Chain Drive - 1HP

Description	Max Leaf Weight	Max Gate Width	Price
SL-580	1900 lbs.	75'	2,100.00



Deimos

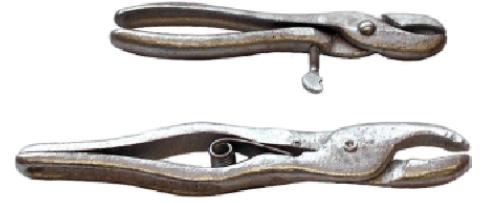
Gear Drive (Rack)

Description	Max Leaf Weight	Max Gate Width	Price
Deimos BT	660 lbs.	20'	\$550.00



Hog Ring Pliers

Description	Part no.	Per Sack	Wt. Each
Large Size, Spring Action	070004	10	\$4.17
Economy	070003	10	\$7.95



Gate Clip Bender

Description	Part no.	Per Sack	Wt. Each
21" Length	070009	1	\$74.95



Fence Pliers

Description	Part no.	Per Sack	Wt. Each
Klein #7	KL7	1	\$65.00
Plier Pouch - Felco	PPF	1	\$19.95

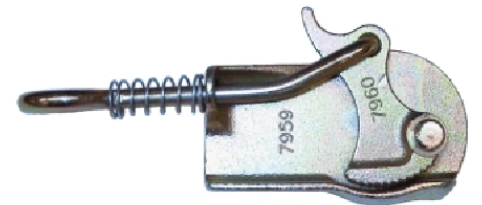


Sinotek Clevis Wire Grip

Description	Part no.	Per Sack	Wt. Each
Sinotek	SIN	1	\$15.00

Maasdam Wire Grip

Description	Part no.	Per Sack	Wt. Each
1000# Load	070026	1	\$17.56



Klein Havens Wire Grip

Description	Part no.	Per Sack	Wt. Each
2500# Load	070022	1	\$120.67



Maasdam Power Pulls

NOTE: Additional replacement parts available on special order.

Description	Part no.	Per Sack	Wt. Each
1,000 lbs. - Max. lift 12'	070011	1	\$44.77
Replacement Parts			
2,000 lbs. - Max. lift 6'	070012	1	\$54.43



Fence Stretcher Bar

Description	Part no.	Per Sack	Wt. Each
36" Wide 3 Hook	070032	1	\$21.95



Pul-Jak

Heat-treated Malleable Iron
with Alloy Steel Rod

Description	Part no.	Per Sack	Wt. Each
1000 lbs. Capacity - 2 1/2" Rod	070031	1	\$125.53



Post Driver

Description	Part no.	Per Sack	Wt. Each
#16 Post Driver with Handle	070653	1	\$75.00



Commercial Weight

Galvanized Pipe (Structural)
Hot Rolled

1 3/8" to 2 3/8" (.079) 2 7/8" and up (.125).

Description	Part no.	Wt./ft.	Qty/Bundle	Price
1 3/8" O.D. - 21'	036858	1.05	91	\$0.80
1 3/8" O.D. - 24'	036766	1.05	91	\$0.59
1 5/8" O.D. - 21'	036864	1.34	61	\$1.03
1 5/8" O.D. - 24'	036866	1.34	61	\$1.03
1 7/8" O.D. - 21'	036872	1.54	61	\$1.18
1 7/8" O.D. - 24'	036873	1.54	61	\$1.18
2 3/8" O.D. - 21'	037190	1.94	37	\$1.04
2 3/8" O.D. - 24'	036882	1.94	37	\$1.49
2 7/8" O.D. - 18'	037191	3.68	19	\$2.64
2 7/8" O.D. - 21'	036816	3.68	19	\$2.64
2 7/8" O.D. - 24'	036817	3.68	19	\$2.64
3 1/2" O.D. - 21'	036927	4.52	19	\$3.24
Add .25 per post for cutting				
3 1/2" O.D. - 24'	036930	4.52	19	\$3.24



Swedged Top Rail - Commercial Weight (.079)

Description	Part no.	Qty.	Weight	Price
1 5/8" O.D. - 10'6" S.E.	036767	61	14.07	\$7.53
1 3/8" O.D. - 21' S.E.	036765	91	22.05	\$0.64
1 5/8" O.D. - 21' S.E.	036773	61	28.14	\$0.79



1 5/8" O.D. Commercial Weight (.079)

Galvanized Tubing

Description	Part no.	Wt./Each	Qty/Bundle	Price
5' 6"	036775	6.11	61	\$4.05
6'	036776	6.66	61	\$4.42
6' 6"	036777	7.22	61	\$4.78
7'	036778	7.77	61	\$5.15

1 7/8" O.D. Commercial Weight (.079)

Galvanized Tubing

Description	Part no.	Wt./Each	Qty/Bundle	Price
6'	036867	7.68	61	\$7.11
7'	036869	8.96	61	\$8.30
8'	036870	10.24	61	\$9.48

2 3/8" O.D. Commercial Weight (.079)

Galvanized Tubing

Description	Part no.	Wt./Each	Qty/Bundle	Price
6'	036874	9.60	37	\$8.96
8'	036878	12.80	37	\$11.95

Schedule 40

Galvanized Pipe
Hot Rolled

Description	Part no.	Wt./ft.	Qty/Bundle	Price
1 3/8" O.D. - 21'	033500	1.68	91	\$1.19
1 5/8" O.D. - 21'	033551	2.27	42	\$1.61
1 7/8" O.D. - 21'	033712	2.72	61	\$1.93
1 7/8" O.D. - 24'	033714	2.72	61	\$1.93
2 3/8" O.D. - 21'	033952	3.65	37	\$2.59
2 3/8" O.D. - 24'	033954	3.65	37	\$2.59
2 7/8" O.D. - 18'	034280			\$3.17
2 7/8" O.D. - 21'	034282	5.79	29	\$4.11
2 7/8" O.D. - 24'	034284	5.79	29	\$4.11
3 1/2" O.D. - 21'	034287	7.58	29	\$5.38
3 1/2" O.D. - 24'	034289	7.58	29	\$5.38
4" O.D. - 21'	034471	9.185		\$6.07
4 1/2" O.D. - 21'	034477	10.79	10	\$7.66
4 1/2" O.D. - 24'	034479	10.79	10	\$7.66
6 5/8" O.D. - 21'	034502	18.97	5	\$13.46
Add 1.00 per post for cutting				
6 5/8" O.D. - 24'	034504	18.97	5	\$13.46



Swedged Top Rail 17 Gauge (.055)

Galvanized Tubing

Description	Part no.	Wt./Each	Qty/Bundle	Price
1 3/8" O.D. - 10' 6" S.E.	030007	7.76	91	\$12.33
1 5/8" O.D. - 10'6" S.E.	036767	11.66	61	\$11.50



Square Tubing

Description	Part no.	Weight	Price/ft.	Price
5/8" 18ga.	042310	0.34	0.65	\$0.67
1" 16ga.	037099	0.83	1.85	\$1.31
1" x 2" 16ga.	036047	1.27	2.05	\$1.43
1 1/2" 16ga.	043299	1.27	2.65	\$1.95
2" 16ga.	034966	1.71	3.03	\$2.64
2 1/2" 14ga.	043396	2.73	5.89	\$4.66
3" 14ga.	043397	3.06	7.11	\$5.48
4" 11ga.	043398	6.32	13.25	\$10.97



Full Length - 16ga.

Description	Part no.	Wt./ft.	Qty/Bundle	Price
1 3/8" - 21'	650022		91	\$1.40
1 3/8" S.E. - 21'	650062		91	\$1.40
1 5/8" S.E. - 21'	650142		61	\$1.75
1 5/8" - 21'	650112		61	\$1.75
1 5/8" - 24'	650132		61	\$1.75
1 7/8" - 21'	650152		61	\$1.96
1 7/8" - 24'	650172		61	\$1.96
2 3/8" - 21'	650192		37	\$2.41
2 3/8" - 24'	650212		37	\$2.41

Full Length - PC20

Description	Part no.	Wt./ft.	Qty/Bundle	Price
1 5/8" S.E. - 21'	675132		61	\$2.39
1 5/8" - 21'	675102		61	\$2.39
1 7/8" - 24'	675222		61	\$2.82
2 3/8" - 21'	675302		37	\$3.57
2 3/8" - 24'	675322		37	\$3.57
2 7/8" - 21'	675402		19	\$5.36
2 7/8" - 24'	675412		19	\$5.36

Full Length - PC40

Description	Part no.	Wt./ft.	Qty/Bundle	Price
1 5/8" - 21'	695012		61	\$3.05
1 7/8" - 24'	695112		61	\$3.78
2 3/8" - 21'	695202		37	\$5.05
2 3/8" - 24'	695212		37	\$5.05
2 7/8" - 21'	695302		19	\$7.77
2 7/8" - 24'	695312		19	\$7.77

Pre-cuts - 16ga.

Description	Part no.	Wt./ft.	Qty/Bundle	Price
1 5/8" - 6'	650432		61	\$10.03
1 5/8" - 7'	650452		61	\$11.70
1 5/8" - 8'	650472		61	\$13.37
1 7/8" - 6'	650532		61	\$11.68
1 7/8" - 7'	650552		61	\$13.63
1 7/8" - 8'	650572		61	\$15.57
1 7/8" - 9'	650582		61	\$17.53
2 3/8" - 6'	650632		37	\$14.47
2 3/8" - 7'	650652		37	\$16.88
2 3/8" - 8'	650672		37	\$19.28
2 3/8" - 9'	650702		37	\$21.69
1 3/8" - 10'6"	650052		91	\$13.81
1 5/8" - 10'6"	650102		61	\$17.59

Pre-cuts - 17ga.

Description	Part no.	Wt./ft.	Qty/Bundle	Price
1 5/8" S.E. - 10'4"	635882		91	\$12.50
1 5/8" - 6'	635892		61	\$9.05
1 5/8" - 7'	635912		61	\$10.55
1 7/8" - 6'6"	635952		61	\$11.08
1 7/8" - 7'6"	635972	61	61	\$12.78